

NOTE ON SOME FURTHER FAINT BLUE
VARIABLES*Guillermo Haro and Willem J. Luyten**

Recently (1) we published data on five faint blue variables found during a survey of blue stars on plates taken with the Palomar 48-inch Schmidt telescope in regions near the South Galactic Pole. In the further course of the same survey six more such stars were found, data for which are given in the accompanying table, the different columns of which give, in order, the serial number, the 1950 position, and the galactic latitude, the approximate apparent magnitudes as estimated on the Palomar Survey plates, and the dates of these plates, the photographic magnitude estimated on our three-image plates, the differences between the blue and yellow (B-V) and between the ultraviolet and blue (U-B) images, respectively, estimated in steps, and finally the dates of our plates. Identification charts for all six stars are also given below.

Star N° 6 appears to be red at minimum and stars Nos. 10 and 11 appear to be slightly yellow at minimum but blue at maximum. It could be, particularly in the case of star N° 6, that it were a flare star showing during the maximum the characteristic ultraviolet colour; however, at the same time, these three stars perhaps are variables of the SS Cygni type with a reddish or yellow component, the colour of which predominates during the minimum. Stars Nos. 7, 8 and 9 appear to be blue both at minimum and at maximum, and may well be eruptive type variables similar to those in the first list.

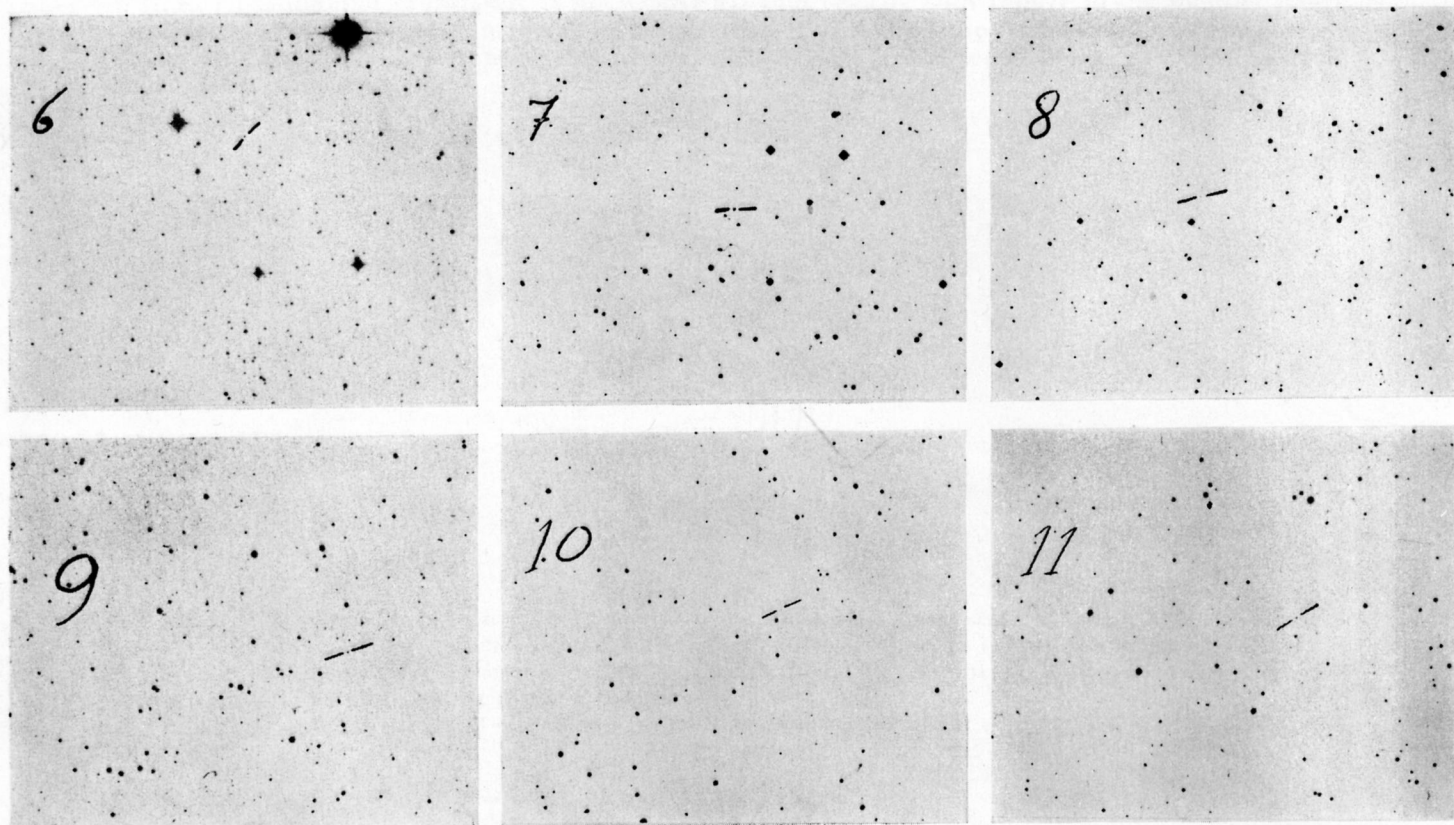


Fig. 1.—Identification Charts for the six variables

* Department of Astronomy, University of Minnesota.

TABLE I
Faint blue variable stars

Nº	R. A. (1950)	Dec. (1950)	b	blue	red	date	pg.	color	date
6	21 44 20	— 2 32.2	—41	>21	20.4	1954 Jul. 4	18.9	—2 —4	1958 Nov. 8
7	22 23 04	—11 29.0	—54	20.2	20.2	1954 Aug. 27	19.1	—1 —2	1958 Oct. 16
8	22 40 59	— 0 28.4	—50	19.2	19.4	1951 Sept. 9	17.9	—1 —4	1958 Nov. 5
9	2 20 20	—19 46.3	—65	19.7	20.1	1951 Nov. 30	18.0	—1 —3	1958 Oct. 16
10	2 33 17	—13 34.1	—61	19.5	19.3	1953 Nov. 11	18.1	0 —3	1958 Oct. 20
							18.2	—1 —2	1958 Nov. 9
11	3 39 13	—26 45.7	—51	20.7	20.2	1953 Nov. 30	18.2	—1 —1	1958 Oct. 15
				20.8	20.7	1953 Dec. 17	18.3	—1 —2	1958 Oct. 17

The plates from which the present data were derived were taken during our tenure as guest investigators in the Mount Wilson and Palomar Observatories, and it is a pleasure to express our gratitude to Dr. Bowen and the staff of the observatories for the privileges received.

BIBLIOGRAPHY

1. Pub. A. S. P. Vol. 71, 469, October 1959.