

ERRATA

the paper "Scattered Light in M8" by L.J. Sánchez & M. Peimbert, published in RevMexAA, Vol. 22 (1991), pp. 285-296 should be amended. In Table 1 the entry for M8 1 is listed as $90''S$ and $175''W$ of 9 Sgr but should be $60''S$ of 9 Sgr. Figure 1 is wrong and should be substituted by:

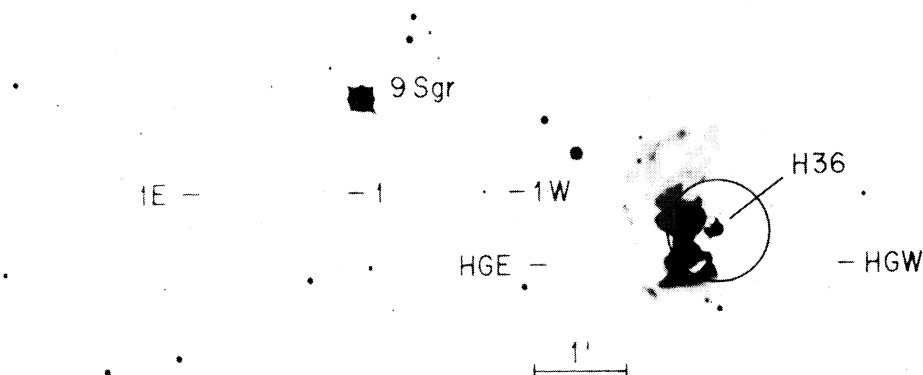


Fig. 1. Observed regions and a circle of $32''$ radius centered on Herschel 36 are superposed on a photograph obtained with the 3-m Shane telescope (Lick Observatory photograph). Region HG is located $14''S$ and $17''E$ of Herschel 36.

In the paper "On the Nature of GGD 25" by J. Bohigas, published in RevMexAA, Vol. 24 (1992), pp. 121-128, Figures 1, 2 and 5 were unsatisfactory, they have been repeated for better representation (see Plates).