

GX 301-2 PRE-PERIASTRON AND APASTRON FLARES WITH *MAXI*

Á. Torregrosa², J. J. Rodes-Roca^{1,2}, J. M. Torrejón^{1,2}, G. Sanjurjo-Ferrín², T. Mihara³, M. Nakajima⁴,
 and M. Sugizaki⁵

Received July 10 2024; accepted October 2 2024

ABSTRACT

The bright high-mass X-ray binary GX 301-2 exhibits two periodic flare episodes along its orbit which are produced when the neutron star is close to the apastron and periastron passages. Time-resolved spectra were extracted and several models applied to describe all of them. The best description was obtained with a blackbody continuum modified by the Fe K-shell absorption edge, absorbed by a large column density on the order of 10^{23} cm^{-2} and, if present, a Fe K α fluorescent emission line. Three of the nine apastron flares were as bright as the pre-periastron flare and two of them coincided with spin-up episodes of the neutron star. This fact points to the presence of a transient disc around the neutron star as it passes through the apastron that increases the accretion process. The size of the emitting region on the neutron star surface showed some variability but quite consistent with a hot spot.

RESUMEN

GX 301-2 presenta dos fulguraciones periódicas que se producen cuando la estrella de neutrones se encuentra cerca de los pasos por el apoastro y el periastro. Se extrajeron los espectros con resolución en fase orbital y la mejor descripción de todos ellos se obtuvo con un continuo de cuerpo negro modificado por el umbral de absorción de la capa K del Fe, absorbido por una gran columna de hidrógeno (10^{23} cm^{-2}) y, si estaba presente, una línea de emisión fluorescente del Fe K α . Tres de las nueve fulguraciones en el apoastro fueron tan brillantes como la fulguración del preperiastro y dos de ellas coincidieron con episodios de aumento del período de la pulsación de la estrella de neutrones. Este hecho apunta a la presencia de un disco transitorio alrededor del objeto compacto en su paso por el apoastro. El tamaño de la región de emisión indica una mancha caliente en la superficie del objeto compacto.

Key Words: pulsars: individual: GX 301-2 — supergiants — X-rays: binaries

1. INTRODUCTION

GX 301-2 (also known as 4U 1223-62) is an X-ray pulsar whose rapid variability in the high-energy X-ray flux was discovered by McClintock et al. (1971) and Lewin et al. (1971). The neutron star moves in an eccentric orbit ($e = 0.462$)

with an orbital period of 41.5 days (Sato et al. 1986) around the early B-type companion, Wray 15-977 (BP Cru). Its spin period of ≈ 685 s was discovered by White et al. (1976) and long-term frequency history shows a complex behavior spinning up and down on different timescales, as it can be seen in the *Fermi*/GBM Accreting Pulsars Program (Finger et al. 2009; Malacaria et al. 2020). The X-ray light curve shows a regular strong peak which is due to the pre-periastron passage of the neutron star. At this orbital phase, the compact object not only accretes matter from the dense stellar wind but is further enhanced by the material in the circumstellar disc around the compact object, which in turns powers the X-ray emission. Besides this strong flare,

¹Department of Physics, Systems Engineering and Signal Theory, University of Alicante, 03080 Alicante, Spain.

²University Institute of Physics Applied to Sciences and Technologies, University of Alicante, 03080 Alicante, Spain.

³MAXI team, Institute of Physical and Chemical Research (RIKEN), 2-1 Hirosawa, Wako, Saitama 351-0198, Japan.

⁴Nihon University School of Dentistry at Matsudo 2-870-1 Sakae-cho Nishi, Matsudo-shi, Chiba 271-8587, Japan.

⁵Science and Engineering, Kanazawa University, Kakuma, Kanazawa, Ishikawa 920-1192, Japan.

evidence of a second though much weaker periodic flare near apastron passage was discovered by Pravdo et al. (1995). However, it is not always detectable (Pravdo & Ghosh 2001). Spherically symmetric stellar wind models fail to describe both column density and luminosity data. Nevertheless, adding a gas stream which is not spherically distributed around the optical companion, improves the description of the data producing strong peaks in both column density and luminosity data (Stevens 1988; Leahy 1991; Haberl 1991a).

The spectral classification of Wray 15-977 is B1 Ia+ hypergiant (Kaper et al. 1995), confirmed by the spectra taken with the high-resolution Ultraviolet and Visual Echelle Spectrograph on the Very Large Telescope (Kaper et al. 2006). Model atmosphere fits to high-resolution optical spectra gave a radius $R_* = 62 R_\odot$, a mass $M_* = (43^{+10}_{-4}) M_\odot$, an effective temperature $T_{\text{eff}} = 18\,000$ K and a luminosity $L_* = 5 \times 10^5 L_\odot$. This luminosity corresponds to a distance $D = 3$ kpc, proposed by Kaper et al. (2006) on the basis of the Na I D interstellar lines. The European Space Agency (ESA) mission Gaia⁶ Early Data Release 3 (GEDR3) has been used to find the distance to GX 301-2, $D = (3.55^{+0.18}_{-0.16})$ kpc. It is known as "photogeometric" distance and has been determined by using the parallax measure, BR-RP colour and the source's G-band magnitude (Bailer-Jones et al. 2021).

GX 301-2 has been observed by most X-ray observatories such as *Tenma* (Leahy 1991), *EXOSAT* (Haberl 1991a), *ASCA* (Saraswat et al. 1996; Endo et al. 2002), *RXTE* (Mukherjee & Paul 2004), *BeppoSAX* (La Barbera et al. 2005), *Chandra* (Watanabe et al. 2003) and *Suzaku* (Suchy et al. 2012). Focusing the study of the spectrum on the [0.3–10.0] keV energy band, the X-ray continuum spectra are usually described by three components: (i) an extremely absorbed power law; (ii) a scattered high absorbed power law; and (iii) an absorbed thermal component with a temperature of 0.8 keV. Moreover, the residuals between the spectrum and the continuum model show a number of emission lines depending on the X-ray observatory and the orbital phase of the observation. In addition, the iron complex at 6.4 keV was fully resolved by *Chandra* detecting the Compton shoulder of the iron K α line at 6.24 keV (Watanabe et al. 2003).

The source GX 301-2 was observed with the *XMM-Newton* observatory on August 14th, 2008 (MJD 54 692.11–54 692.88, ObsID 0555200301), and on July 12th, 2009 (MJD 55 024.103–55 024.643, Ob-

sid 0555200401). Both observations were taken during the pre-periastron flare. As a result of the high flux at this orbital phase ≈ 0.91 , the *EPIC/MOS* CCD cameras were turned off to provide more telemetry for the *EPIC/PN* instrument, which was operated in modified timing mode, and a medium filter was used. In this timing mode the lower energy threshold of the instrument is increased to 2.8 keV to avoid telemetry drop outs due to the brightness of the source. The orbital-phase averaged spectra of both observations were extracted and described with several models. After trying different models, we found that the best continuum model that could fit both spectra significantly well was a hybrid model, combining thermal and non-thermal components. A component is called thermal when radiation is produced as a consequence of the thermal motion of the plasma particles (for instance, blackbody radiation). Otherwise, the emitted radiation is non-thermal (for instance, non-thermal inverse-Compton emission) (Giménez-García et al. 2015). The [2.8–10.0] keV energy spectrum was fitted using a model of the form:

$$F(E) = tbnew \times po + tbnew \times bbody + GL, \quad (1)$$

where *tbnew*⁷, in terms of XSPEC, is a new version of the Tübingen-Boulder interstellar medium absorption model which updates the absorption cross sections and abundances (Wilms et al. 2000); *po* is a typical photon power law whose parameters include a dimensionless photon index (Γ) and the normalisation constant (K), the spectral photons $\text{keV}^{-1} \text{cm}^{-2} \text{s}^{-1}$ at 1 keV; *bbody* corresponds to a simple blackbody model incorporating the temperature kT_{bb} in keV and the normalisation *norm*, defined as L_{39}/D_{10}^2 , where L_{39} is the source luminosity in units of $10^{39} \text{erg s}^{-1}$ and D_{10} is the distance to the source in units of 10 kpc; and *GL* indicates the Gaussian functions added to describe the emission lines. Therefore, the power-law component is interpreted in terms of inverse Compton-scattering by hot electrons of a seed radiation field, while the blackbody radiation is a foot-print of hot-spots on the NS surface. The total absorption column comprises the contribution from the interstellar medium and from the medium local to the source. The latter is by far the most dominant, and can be used to probe stellar wind structures or the presence of matter surrounding the compact object (i.e. accretion stream, accretion disc).

⁶<https://www.cosmos.esa.int/gaia>

⁷<https://pulsar.sternwarte.uni-erlangen.de/wilms/research/tbabs/>

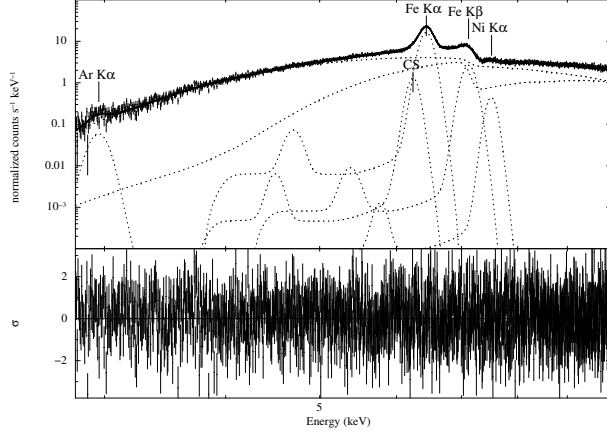


Fig. 1. *XMM-Newton* with ID 0555200301 (2008) orbital phase averaged spectrum of GX 301-2 in the (2.8–10.0) keV band. *Top panel*: data and best-fit model described by equation (1). *Bottom panel* shows the residuals between the spectrum and the model. Spectral parameters can be found in Table 1 (third column).

The best-fit parameters for the overall spectra of GX 301-2 and the corresponding uncertainties are summarized in Table 1 where it is also included the equivalent width (EW) of the Gaussian emission lines. Figures 1 and 2 show the data, the best-fit model described by equation (1), and the corresponding residuals.

The Gaussian emission lines were located at Ar K α , Fe K α , Fe K β , and Ni K α , fluorescent line energies in the two *XMM-Newton* observations; meanwhile, the Gaussian emission lines located at Ca K α , Cr K α , and Ni K β fluorescent line energies were only detected in the *XMM-Newton* observation from 2009. Moreover, the Fe K α showed residuals when fitted with a single Gaussian and an additional Compton Shoulder was also included (Watanabe et al. 2003). The *XMM-Newton* observation from 2009 was also analysed by Fürst et al. (2011). They used different continuum models to fit this spectrum but they also added the same Gaussian emission lines used in this work. The *XMM-Newton* observation from 2008 was also studied by Roy et al. (2024). To describe this spectrum, these authors fitted a model as previously used by Fürst et al. (2011) and identified the same K α emission lines, included the Compton Shoulder, and Fe K β , but Ni K β was not detected.

The size of emitting region on the NS surface was obtained from the *body* component by the equation:

$$R_{\text{bb}}(\text{km}) = 3.04 \times 10^4 \frac{D\sqrt{F_{\text{bb}}}}{T_{\text{bb}}^2}, \quad (2)$$

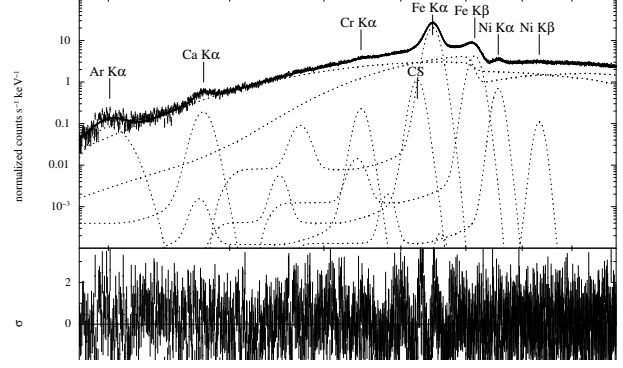


Fig. 2. *XMM-Newton* with ID 0555200401 (2009) orbital phase averaged spectrum of GX 301-2 in the (2.8–10.0) keV band. *Top panel*: data and best-fit model described by equation (1). *Bottom panel* shows the residuals between the spectrum and the model. Spectral parameters can be found in Table 1 (fourth column).

where D is the distance to the source in kpc, F_{bb} is the unabsorbed flux in $\text{erg s}^{-1} \text{cm}^{-2}$ in the energy range [2.8–10.0] keV and T_{bb} is the temperature in keV. Taking into account the distance to the source given by *GEDR3* $d(\text{kpc}) = 3.55^{+0.18}_{-0.16}$ it has been found that the radius of the emission region is consistent with a hot spot on the NS surface: from the 2008 observation, the calculated flux was $F_{\text{bb}} = (1.40^{+0.17}_{-0.20}) \times 10^{-9} \text{ erg s}^{-1} \text{cm}^{-2}$ and gave a radius $R_{\text{bb}} = 0.41^{+0.10}_{-0.08} \text{ km}$, and from the 2009 observation, $F_{\text{bb}} = (8.1^{+1.6}_{-0.9}) \times 10^{-10} \text{ erg s}^{-1} \text{cm}^{-2}$ and $R_{\text{bb}} = 0.27^{+0.07}_{-0.06} \text{ km}$, respectively.

The intrinsic bolometric X-ray luminosity can be expressed through the unabsorbed X-ray flux of the source as:

$$L_X = 4\pi D^2 F_{\text{no-abs}}, \quad (3)$$

where L_X is the X-ray luminosity, D is the distance to the source and $F_{\text{no-abs}}$ is the unabsorbed flux in the [2.8–10.0] keV energy band. The observed $F_{\text{no-abs}}$ for the 2008 and 2009 observations were $(6.9^{+0.8}_{-1.0}) \times 10^{-9} \text{ erg s}^{-1} \text{cm}^{-2}$ and $(5.3^{+1.0}_{-0.6}) \times 10^{-9} \text{ erg s}^{-1} \text{cm}^{-2}$, respectively, corresponding to X-ray luminosities of $L_{X2008} = (1.1 \pm 0.3) \times 10^{37} \text{ erg s}^{-1}$ and $L_{X2009} = (8.1^{+2.4}_{-1.6}) \times 10^{36} \text{ erg s}^{-1}$.

In Table 1, *norm* represents the blackbody normalisation and is related to the luminosity of the X-ray source and the distance (L_{39}/D_{10}^2). Matching this expression with the values of luminosities and distance to the source, the results were 0.08 ± 0.10 and $0.06^{+0.08}_{-0.07}$ from the 2008 and 2009 observations, respectively, which is consistent with the fit values taking the uncertainties into account.

TABLE 1
BEST-FIT MODEL PARAMETERS FOR THE AVERAGED SPECTRA^a

Component	Parameter	Value (ID 0555200301)	Value (ID 0555200401)
<i>tbnew</i>	N_H^1 [10^{22} atoms cm^{-2}]	191^{+19}_{-9}	183^{+12}_{-10}
	N_H^2 [10^{22} atoms cm^{-2}]	$42.2^{+1.1}_{-1.0}$	$53.3^{+2.2}_{-1.7}$
<i>Power law</i>	Photon index Γ	1.2 ± 0.3	$1.03^{+0.13}_{-0.12}$
	norm [$\text{keV}^{-1} \text{ s}^{-1} \text{ cm}^{-2}$]	$0.7^{+0.7}_{-0.3}$	$0.40^{+0.14}_{-0.10}$
<i>bbody</i>	kT [keV]	$3.14^{+0.21}_{-0.11}$	3.37 ± 0.22
	norm [L_{39}/D_{10}^2]	$0.041^{+0.005}_{-0.006}$	$0.026^{+0.005}_{-0.002}$
Ar $K\alpha$	Line E [keV]	2.96 ± 0.04	3.013 ± 0.012
	σ [keV]	$0.005^{+0.010}_{-0.005}$	$0.092^{+0.021}_{-0.018}$
	EW [keV]	$0.11^{+0.06}_{-0.03}$	$0.82^{+0.09}_{-0.07}$
	norm [$10^{-5} \text{ ph s}^{-1} \text{ cm}^{-2}$]	$2.8^{+1.5}_{-0.7}$	$4.7^{+0.5}_{-0.4}$
Ca $K\alpha$	Line E [keV]		3.756 ± 0.008
	σ [keV]		$0.021^{+0.018}_{-0.021}$
	EW [keV]		0.094 ± 0.009
	norm [$10^{-5} \text{ ph s}^{-1} \text{ cm}^{-2}$]		$6.4^{+0.6}_{-0.6}$
Cr $K\alpha$	Line E [keV]		$5.463^{+0.021}_{-0.015}$
	σ [keV]		0.01 (frozen)
	EW [keV]		$0.0117^{+0.0023}_{-0.0022}$
	norm [$10^{-5} \text{ ph s}^{-1} \text{ cm}^{-2}$]		$8.1^{+1.6}_{-1.5}$
Compton Shoulder	Line E [keV]	6.24 (frozen)	6.24 (frozen)
	σ [keV]	0.01 (frozen)	0.01 (frozen)
	EW [keV]	$0.0207^{+0.0024}_{-0.0021}$	$0.0163^{+0.0011}_{-0.0007}$
	norm [$10^{-4} \text{ ph s}^{-1} \text{ cm}^{-2}$]	$7.7^{+0.9}_{-0.8}$	$4.5^{+0.3}_{-0.2}$
Fe $K\alpha$	Line E [keV]	$6.4388^{+0.0017}_{-0.0009}$	$6.4698^{+0.0007}_{-0.0004}$
	σ [keV]	$0.0462^{+0.0019}_{-0.0022}$	$0.0503^{+0.0008}_{-0.0009}$
	EW [keV]	$0.528^{+0.005}_{-0.006}$	0.701 ± 0.003
	norm [$10^{-2} \text{ ph s}^{-1} \text{ cm}^{-2}$]	$1.159^{+0.012}_{-0.014}$	1.016 ± 0.005
Fe $K\beta$	Line E [keV]	$7.121^{+0.005}_{-0.004}$	$7.1518^{+0.0019}_{-0.0012}$
	σ [keV]	$0.063^{+0.006}_{-0.007}$	$0.056^{+0.002}_{-0.003}$
	EW [keV]	0.134 ± 0.005	0.223 ± 0.003
	norm [$10^{-3} \text{ ph s}^{-1} \text{ cm}^{-2}$]	$2.49^{+0.09}_{-0.10}$	$2.64^{+0.03}_{-0.04}$
Ni $K\alpha$	Line E [keV]	$7.513^{+0.015}_{-0.018}$	$7.558^{+0.003}_{-0.012}$
	σ [keV]	0.03 ± 0.03	$0.00^{+0.03}_{-0.00}$
	EW [keV]	0.027 ± 0.005	0.0422 ± 0.0023
	norm [$10^{-4} \text{ ph s}^{-1} \text{ cm}^{-2}$]	$4.0^{+0.8}_{-0.7}$	4.03 ± 0.22
Ni $K\beta$	Line E [keV]		8.33 ± 0.04
	σ [keV]		$0.03^{+0.07}_{-0.03}$
	EW [keV]		0.008 ± 0.003
	norm [$10^{-5} \text{ ph s}^{-1} \text{ cm}^{-2}$]		9 ± 3
χ_r^2		$\chi^2/(\text{d.o.f.}) = 1531/1420 = 1.1$	$\chi^2/(\text{d.o.f.}) = 1711/1412 = 1.2$

^aParameters for equation (1). Observations ID 0555200301 (third column) and 0555200401 (fourth column). EW represents the equivalent width of the emission line. Uncertainties are given at the 90% confidence limit and d.o.f is degrees of freedom.

An intense Fe $K\alpha$ emission line ($\text{EW} \approx [0.5, 0.7]$ keV) with a global hydrogen column above 10^{24} cm^{-2} has been found in the analysis and it is compatible with Leahy et al. (1988, 1989), and Fürst et al. (2011) who found in this X-ray region a strong emission line Fe $K\alpha$ visible together with a hydrogen column above 10^{24} cm^{-2} .

The flux ratio between the Fe $K\alpha$ and Fe $K\beta$ allowed us to derive that the ionisation state of iron varied from Fe XII–XIII ($\text{Fe } K\beta/\text{Fe } K\alpha = 0.215^{+0.010}_{-0.011}$) in the 2008 observation to Fe > XIV ($\text{Fe } K\beta/\text{Fe } K\alpha = 0.260^{+0.004}_{-0.005}$) in 2009 observation. These results pointed out that only mildly ionised iron was present in the plasma (Fürst et al. 2011).

TABLE 2
EPHEMERIS DATA USED FOR MAXI/GSC 'S
TIMING CALCULATIONS

$T_{0,\text{periastron_passage}}$ (MJD)	48802.79 ± 0.12
P_{orb} (d)	41.498 ± 0.002 (Koh et al. 1997)

On the other hand, the flux ratio between Ni K α and Ni K β (Ni K β /Ni K α = 0.23 ± 0.09) was slightly consistent with measurements in solid state metals within errors (Han & Demir 2009) in the 2009 observation.

The results mentioned above show a slightly different values between parameters from one observation to the other. In order to further study these differences, the pre-periastron flare has been analysed in the long term to find how the spectral parameters evolve with time. In addition, GX 301-2 also shows a periodic near-apastron flare with lower intensity than the pre-periastron flare and it is also included in this long term analysis. For such studies, it is also very convenient to have spectra measured at different orbital phases with uniform phase coverage. The characteristics of the *Monitor of All Sky X-ray Image* (MAXI), moderate energy resolution and all-sky coverage, are well suited for elaborate studies of the orbital phase resolved spectra of bright X-ray sources. The process which was used to obtain the data is explained in § 2.

Observations, data and timing analysis are described in § 2, MAXI/GSC spectral analyses for the pre-periastron and near-apastron flares are discussed in § 3, and § 4 contains the summary of the main results.

2. TIMING ANALYSIS

The orbital phase of the pre-periastron flare has been divided into three sections to perform the spectral analysis. To define them the MAXI/GSC (2.0–20.0) keV light curve with a time bin of 0.02 days⁸ has been folded using the ephemeris from Koh et al. (1997), which are reported in Table 2, and a circular orbit has been assumed because we wanted to have an approximation of the results. Figure 3 shows the light curve folded over the GX 301-2 orbital period where three sections have been identified by vertical lines: I pre-flare, II flare and III post-flare. As a consequence of the low intensity level, only one section has been used to define the near-apastron flare at the [0.20–0.70] orbital phase range. For each orbit, the Modified Julian Dates (MJDs) for every orbital

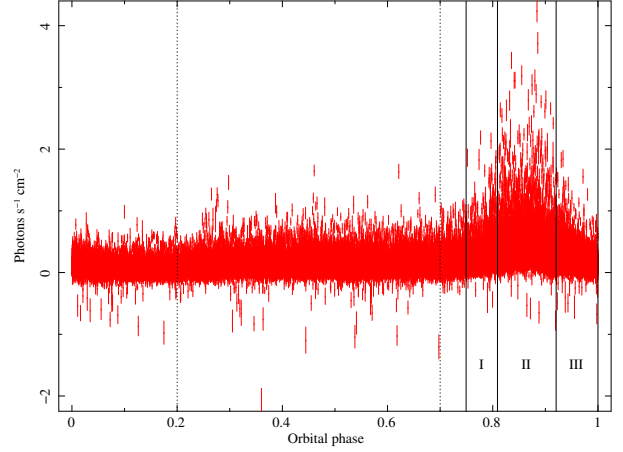


Fig. 3. Folded and background subtracted light curve in the (2.0–20.0) keV energy range. The light curve was folded over the orbital period and binned into ≈ 450 phase bins. The selection criteria for the apastron flare from MAXI data were: orbital phase range = [0.20–0.70] and (2–20) keV flux > 0.5 photons $\text{cm}^{-2} \text{s}^{-1}$. The color figure can be viewed online.

phase range of the pre-periastron flare have been calculated. For each section, data were accumulated over ten consecutive orbits to extract spectra with acceptable signal-to-noise ratio. As an example, Table 3 summarizes MJDs of the first ten orbits for pre-flaring, flaring and post-flaring, which were used as good time intervals (GTIs) to extract the spectra. One possible implication of the circular orbit assumption is that the MJDs would be affected by the approach of the orbit and there could be inaccuracies that could affect the conclusions obtained. However, the spectra are consistent from one set to the next one (see Figures 9–11) and this indicates that the assumption of a circular orbit is useful for the system GX 301-2 when analysing the pre-periastron flare.

Figure 4 shows a comparison between spectra obtained by accumulating ten orbits (top spectra) and spectra obtained by accumulating five orbits (bottom spectra).

In the context of MAXI/GSC data, the passbands often used are called “soft” (2.0–4.0) keV, “medium” (4.0–10.0) keV, and “hard” (10–20.0) keV bands. To search for pre-periastron and near-apastron changes in the X-ray emission, light curves in the (2.0–4.0) keV, (4.0–10.0) keV, (10–20.0) keV and (5.7–7.5) keV (iron complex emission lines) energy bands were extracted and analysed using *As-tropy*, a collection of software packages which are included in *Python* (Astropy Collaboration et al. 2022). In each of these light curves a *Lomb-Scargle* periodogram (Press & Rybicki 1989) was applied and

⁸<http://maxi.riken.jp/pubdata/v71rkn/J1226-627/index.html>

TABLE 3
FIRST TEN ORBITS: PRE-FLARE, FLARE AND POST-FLARE

Pre-flare ($\approx[0.7493, 0.8090]$)	Flare ($\approx[0.8090, 0.9205]$)	Post-flare ($\approx[0.9205, 0.9984]$)
$MJD_i - MJD_f$	$MJD_i - MJD_f$	$MJD_i - MJD_f$
55141.582121–55144.056111	55144.056111–55148.686661	55148.686661–55151.921117
55183.080121–55185.554111	55185.554111–55190.184661	55190.184661–55193.419117
55224.578121–55227.052111	55227.052111–55231.682661	55231.682661–55234.917117
55266.076121–55268.550111	55268.550111–55273.180661	55273.180661–55276.415117
55307.574121–55310.048111	55310.048111–55314.678661	55314.678661–55317.913117
55349.072121–55351.546111	55351.546111–55356.176661	55356.176661–55359.411117
55390.570121–55393.044111	55393.044111–55397.674661	55397.674661–55400.909117
55432.068121–55434.542111	55434.542111–55439.172661	55439.172661–55442.407117
55473.566121–55476.040111	55476.040111–55480.670661	55480.670661–55483.905117
55515.064121–55517.538111	55517.538111–55522.168661	55522.168661–55525.403117

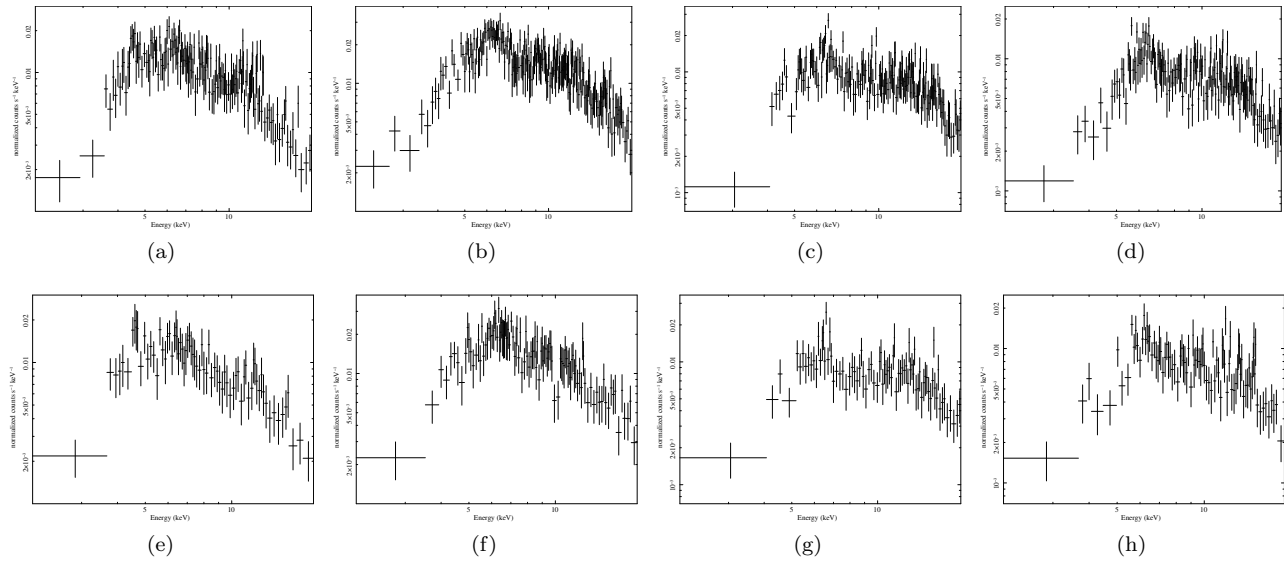


Fig. 4. MAXI/GSC spectra of GX 301-2 in the (2.0–20.0) keV band. (a) and (e): pre-flare, third extraction. (b) and (f) pre-flare, ninth extraction. (c) and (g): post-flare, fifth extraction. (d) and (h): post-flare, eighth extraction. Spectra (a)–(d) correspond to the accumulation of ten orbits. Spectra (e)–(h) correspond to the accumulation of five orbits. Units of the x-axis: Energy (keV). Units of the y-axis: normalized counts $s^{-1} keV^{-1}$.

the error in the period is approximately the area where the peak is at the 90% of its value. It was apparent that the light curves were similar to each other and, in this work, only the periodogram of the light curve (4–10) keV is shown (see Figure 5). As can be seen from Figure 5, the highest peak (power ≈ 0.084) is at (41.4 ± 0.5) days which corresponds to the rotational period of the binary system determined by Koh et al. (1997). The second peak (power ≈ 0.055) in the power density spectrum at ≈ 20.7 days is potentially a harmonic of the orbital period.

The hardness ratio is a specially useful tool to quantify and characterise the source spectrum. Therefore, simple hardness ratio

(hard/medium) and fractional difference hardness ratio (medium–soft)/(medium+soft) have been calculated using the weighted average over 150 bins and plotted in Figures 6 and 7, respectively. The weighting factor here for computing the average HR is the error weighted average, where the errors have been calculated with the general method of using formulas for propagating errors. Both graphs show that the ratios continue to oscillate around the average, with no clear trend.

Figure 8 shows the pulse frequency history of GX 301-2 observed with *Fermi*/GBM Accreting Pulsars Program⁹ (Malacaria et al. 2020). Every two

⁹<http://gamma-ray.nsstc.nasa.gov/gbm/science/pulsars>

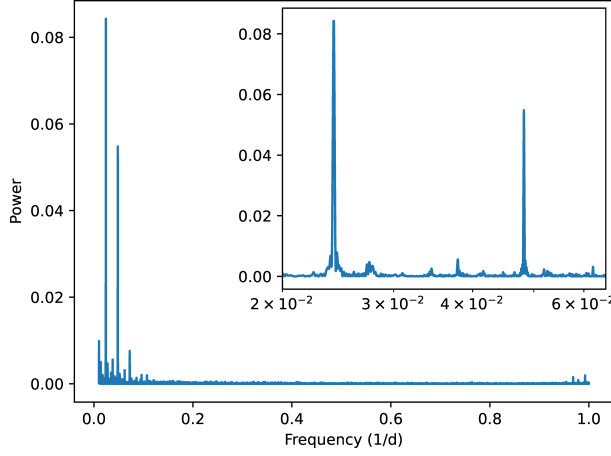


Fig. 5. Lomb-Scargle periodogram of the (4.0–10.0) keV light curve. The plot on the right top corner has been added to show only lower frequencies where the peaks lie. The color figure can be viewed online.

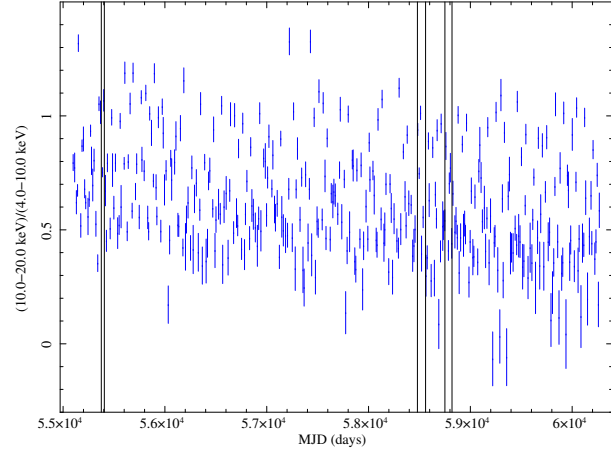


Fig. 6. Hardness ratio $hard/medium = (10.0 - 20.0 \text{ keV})/(4.0 - 10.0 \text{ keV})$ using weighted average. The spin-up episodes are indicated by two vertical lines: (a) from MJD 55375 to 55405, (b) from MJD 58480 to 58560 and (c) from MJD 58750 to 58820. The color figure can be viewed online.

vertical lines on this plot represent a spin-up episode in the history of observations of the source, which have been associated with the formation of a transient accretion disc (Koh et al. 1997; Nabizadeh et al. 2019). Two of these irregular spin-up episodes can be related to the apastron passages (see § 3.2).

3. SPECTRAL ANALYSIS

3.1. Pre-periastron Flare Spectra

The spectra were obtained using the *MAXI*/GSC on-demand process¹⁰; all of them

¹⁰<http://maxi.riken.jp/mxondem>

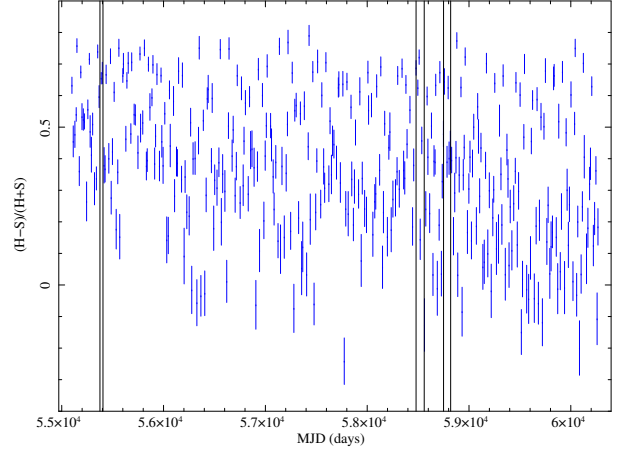


Fig. 7. Hardness curve $(medium - soft)/(medium + soft)$ using weighted averages. The spin-up episodes are indicated by two vertical lines: (a) from MJD 55375 to 55405, (b) from MJD 58480 to 58560 and (c) from MJD 58750 to 58820. The color figure can be viewed online.

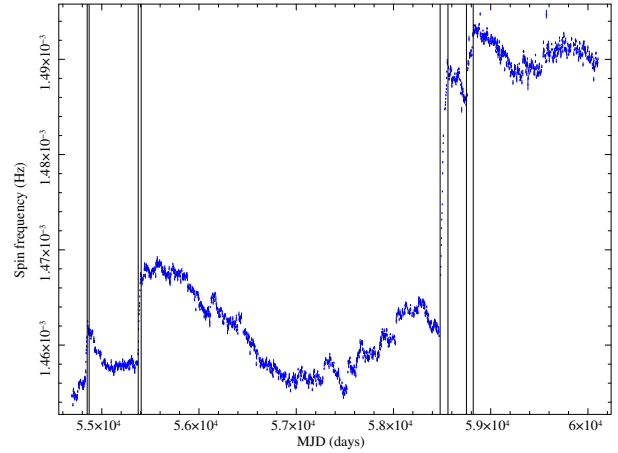


Fig. 8. Spin frequency versus the MJD for the system GX 301-2 using the data from *Fermi*/GBM. There are four spin-up episodes which are indicated by two vertical lines: (a) from MJD 54850 to 54870, (b) from MJD 55375 to 55405, (c) from MJD 58480 to 58560 and (d) from MJD 58750 to 58820. The color figure can be viewed online.

were analysed and modelled with the XSPEC (Arnaud 1996) package and the energy range used for spectral fitting was (2.0–20.0) keV. Both phenomenological and physical models commonly applied to accreting X-ray pulsars have been tested. Models with power law components have been developed to HMXBs, such as Cen X-3 (Ebisawa et al. 1996) and GX 301-2 (Fürst et al. 2011; Ji et al. 2021). First of all, traditional models like power law with a high energy cut-off or with a Fermi-Dirac cut-off were explored. Although these

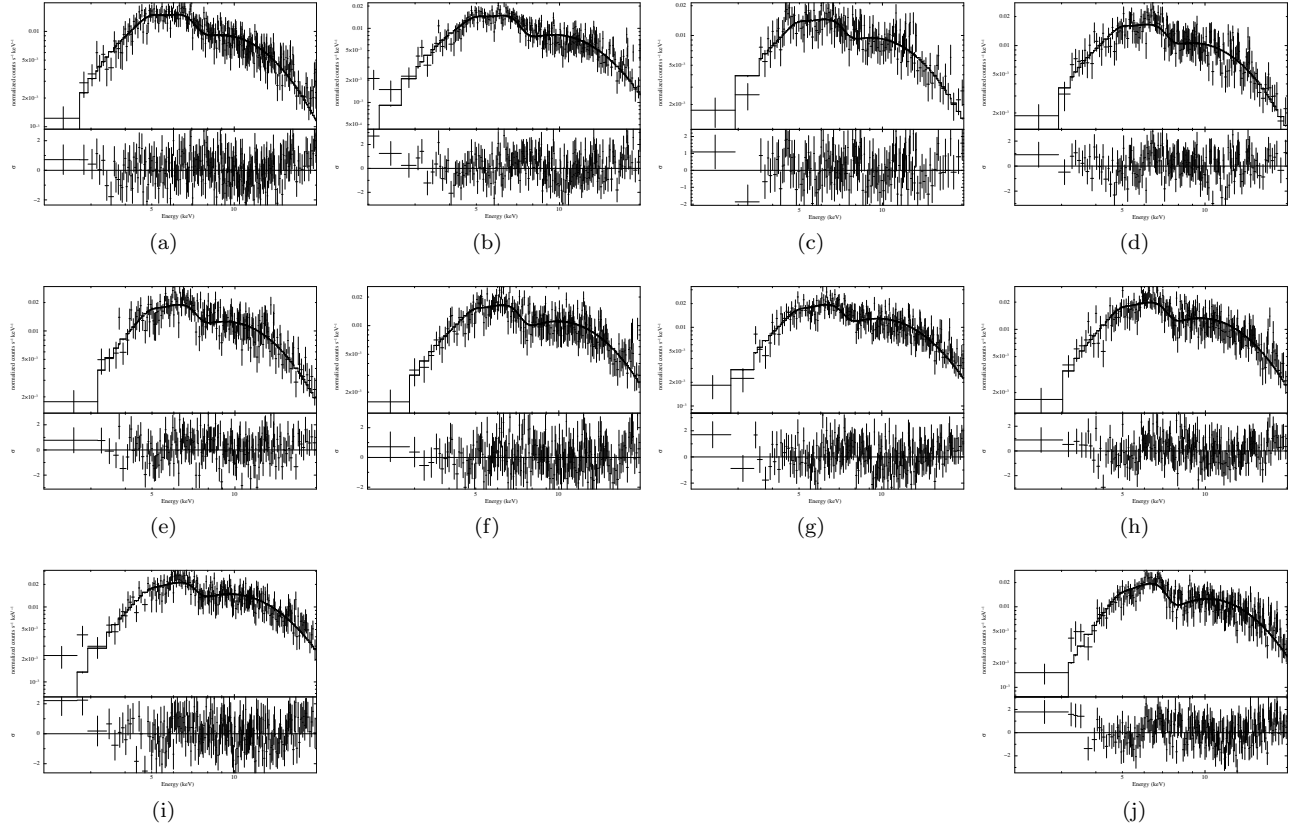


Fig. 9. MAXI/GSC spectra of GX 301-2 in the (2.0–20.0) keV band corresponding to the pre-flare ($\approx[0.7493, 0.8090]$), model defined by equation (6). The same orbital phase range was accumulated in groups of ten consecutive orbits to obtain each spectrum. Units of the x -axis: Energy (keV). Units of the y -axis: Normalized counts $\text{s}^{-1} \text{keV}^{-1}$.

models reasonably well reproduce the observed flare spectra between (2.0–20.0) keV ($\chi_r^2 = [0.96 - 1.32]$), they cannot offer a good statistical and/or physical solution for all spectra because the parameters of the high energy cut-off and the photon index ($\Gamma = [-0.3, 0.6]$) could not be constrained well. As the principal aim is to describe with a consistent model all spectra these models were rejected. Then, the orbital phase-averaged spectra were described using a simple model with two power laws described by equations (4) and (5). A fast charged particle traversing a region containing a strong magnetic field will change direction because the magnetic field exerts a force perpendicular to the direction of motion. Because the velocity vector changes, the charged particle is accelerated and consequently emits electromagnetic energy, called synchrotron radiation. Observed polarisation in the radiation is usually a proof of synchrotron emission (Giménez Cañete & Castro Tirado 2005). The usual spectra form can be described by a power law $F(E) = B E^{-\Gamma}$, where B represents a constant

and Γ is the photon index. The more positive the value of the Γ , the softer is the spectrum. The scattering of X-rays by interstellar dust softens the spectrum by E^{-2} relative to the source spectrum, and soft X-rays are scattered more strongly than hard X-rays. In the energy range (0.1–10) keV, the main interaction between X-rays and matter is the photoelectric effect, whose cross-section varies with energy as $\approx Z^3 E^{-3}$. Consequently, absorption is greatest at low energies and in high- Z materials. Thus, the energy spectra have been fitted by two power-law components, where each photon index indicates the source spectrum and the scattering or absorption spectrum, respectively. Initially, the orbital phase-resolved spectra were fitted with a composite model of two absorbed power laws:

$$F(E) = tb_{new} \times B E^{-\gamma} + tb_{new} \times B E^{-(\gamma+2.0)} + GL, \quad (4)$$

$$F(E) = tb_{new} \times B E^{-\gamma} + tb_{new} \times B E^{-(\gamma+3.0)} + GL. \quad (5)$$

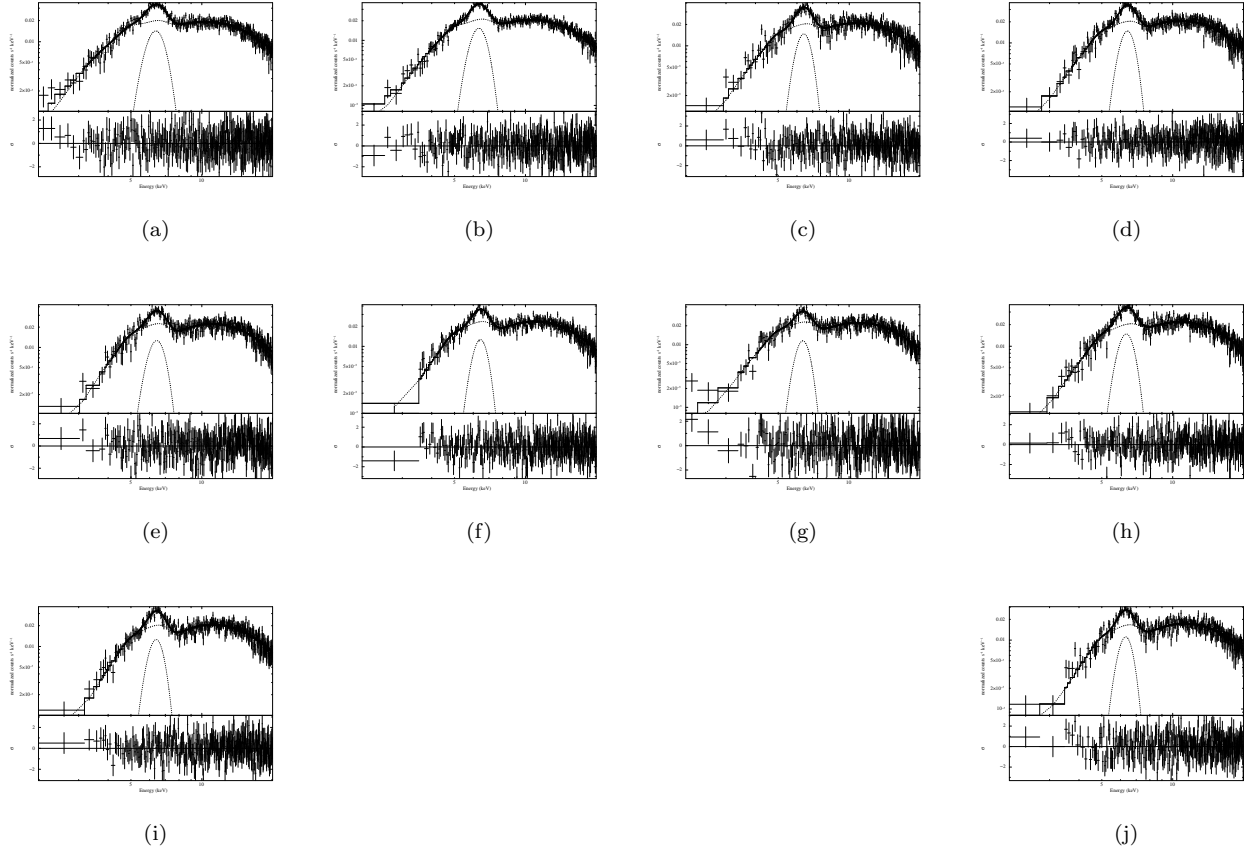


Fig. 10. *MAXI*/GSC spectra of GX 301-2 in the (2.0–20.0) keV band corresponding to the flare ($\approx[0.8090, 0.9205]$), model defined by equation (6). The same orbital phase range was accumulated in groups of ten consecutive orbits to obtain each spectrum. Units of the x-axis: Energy (keV). Units of the y-axis: normalized counts $\text{s}^{-1} \text{keV}^{-1}$.

Although both models described above fitted the averaged spectra between (2.0–20.0) keV with a similar statistical confidence (equation 4, $\chi_r^2 = [0.86–1.10]$; equation 5, $\chi_r^2 = [0.89–1.18]$), they could not offer a consistent astrophysical solution to all the resolved spectra. For example, in the flare spectra N_H^2 values were above $200 \times 10^{22} \text{ cm}^{-2}$ in eight spectra (equation (4), $N_H^2 \approx (231 - 10^6) \times 10^{22} \text{ cm}^{-2}$; equation (5), $N_H^2 \approx (266 - 10^6) \times 10^{22} \text{ cm}^{-2}$), which were not consistent with the N_H values $(10 - 80) \times 10^{22} \text{ cm}^{-2}$ obtained in the *MAXI*/GSC analysis of Islam & Paul (2014).

During flare episodes the surface temperature of the neutron star can reach several million degrees and, therefore, it will emit blackbody radiation with photons in the X-ray range. The blackbody component has been used to describe the soft energy band spectra of HMXBs like Cen X-3 using data from *XMM-Newton* (Sanjurjo-Ferrín et al. 2021) and *MAXI*/GSC (Torregrosa et al. 2022). The overall

MAXI/GSC spectra of the source was modelled with an absorbed *bbody* component. The spectral shape showed evidence for an Fe K-shell absorption edge at $\approx 7.1 \text{ keV}$ (Saraswat et al. 1996; Endo et al. 2002; Ji et al. 2021); therefore, an edge component fixed at this energy was added. The following model was applied to describe all observational data:

$$F(E) = tbnew \times bbody \times edge + GL, \quad (6)$$

where the Gaussian line was also included to account for the iron fluorescent emission line at $\approx 6.4 \text{ keV}$, if present. The model gave a good statistical description (pre-flare, $\chi_r^2 = 0.91 - 1.22$; flare, $\chi_r^2 = 0.89 - 1.07$; post-flare, $\chi_r^2 = 0.85 - 1.18$). In Figures 9–11 the ten *MAXI*/GSC spectra for each pre-periastron section, the best-fitting model, and residuals to the best-fitting model are shown.

Some spectra showed a low-energy excess below $\approx 4.0 \text{ keV}$ as can be seen in Figure 9, images (b), (c), (g), (i) and (j); Figure 10, image (g); and Figure 11,

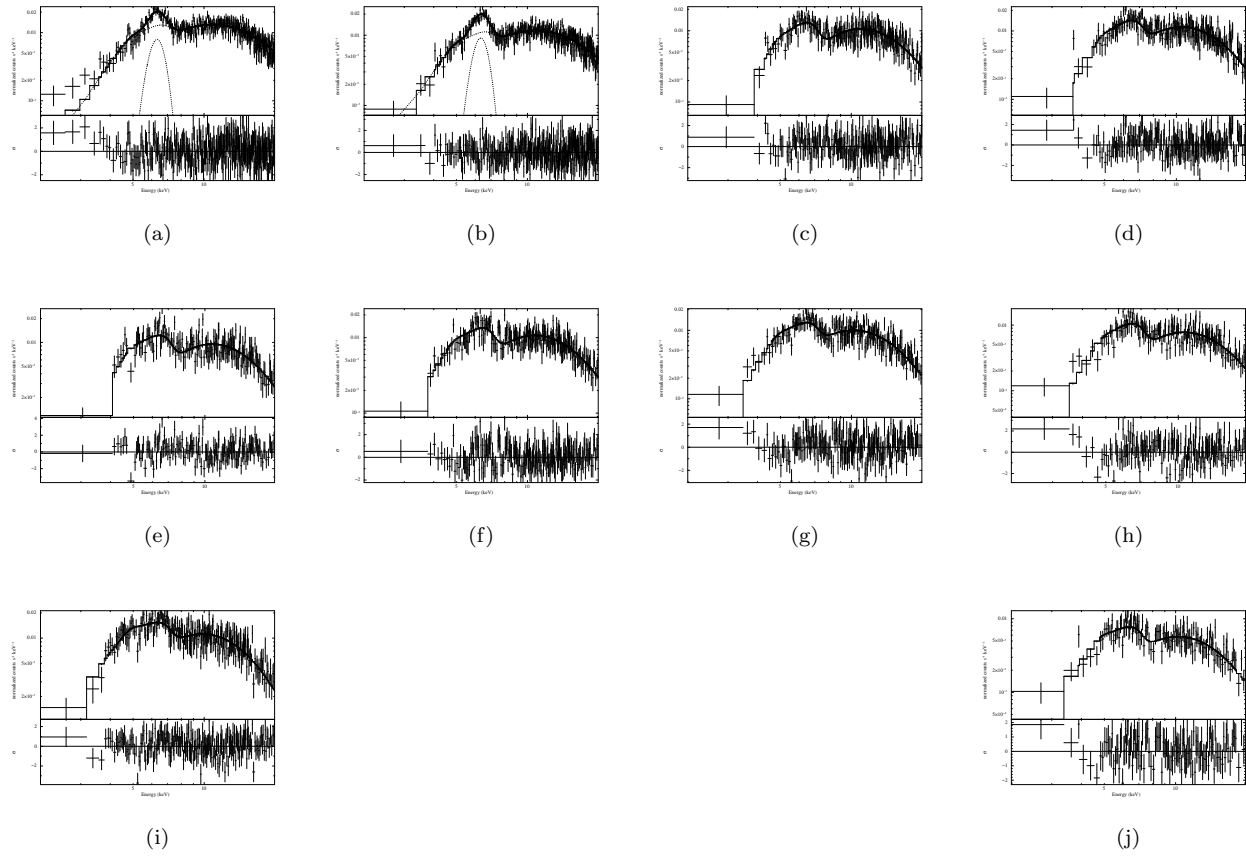


Fig. 11. MAXI/GSC spectra of GX 301-2 in the (2.0–20.0) keV band corresponding to the post-flare ($\approx[0.9205, 0.9984]$), model defined by equation (6). The same orbital phase range was accumulated in groups of ten consecutive orbits to obtain each spectrum. Units of the x -axis: Energy (keV). Units of the y -axis: Normalized counts $\text{s}^{-1} \text{keV}^{-1}$.

images (g), (h) and (j). This soft excess could be produced by a transitory structure in the line of sight because it was not a permanent effect in all X-ray spectra. Therefore, a possible explanation may be the presence of a transitory disc which enhances the accretion of matter. X-ray pulsars such as GX 301-2 tend to be spinning up because the accreted material from the optical star has an angular momentum which is eventually transferred to the compact object. The higher the X-ray luminosity, the more material is accreted by the pulsar, and therefore the faster it will spin. The strongest spin-up event of GX 301-2 so far (between 2018 December and 2019 March) pointed to an accretion due to both direct accretion from the stellar wind and a temporary accretion disc (Nabizadeh et al. 2019). This scenario was also supported by the observations taken with the *Insight-Hard X-ray Modulation Telescope* during the initial part of this spin-up episode (Liu et al. 2021). On the other hand, the low-energy excess could also

be explained by scattering in the gas stream around the neutron star and in the stellar wind of the B-type companion star (Saraswat et al. 1996).

Figures 12 to 19 show the evolution of the best-fit model parameters during the pre-periastron and apastron passages. In Figures 13-19 filled black squares represent the pre-flare parameter values, filled red triangles the flare parameter values, and open blue circles the post-flare parameter values.

Taking the uncertainties into account, the results for the *bbody* normalisation (Figure 12) obtained with XSPEC (open blue circles) are consistent with the values obtained using L_{39}/D_{10}^2 (filled red squares).

The radius of the emission zone (Figure 13) is of the order of 1 km, which is consistent with a hot spot on the NS surface and with the results of *XMM-Newton* data. The temperature of the blackbody (kT in keV, Figure 14) has a constant value between (3.0–3.5) keV in the pre-flare spectra, but it is en-

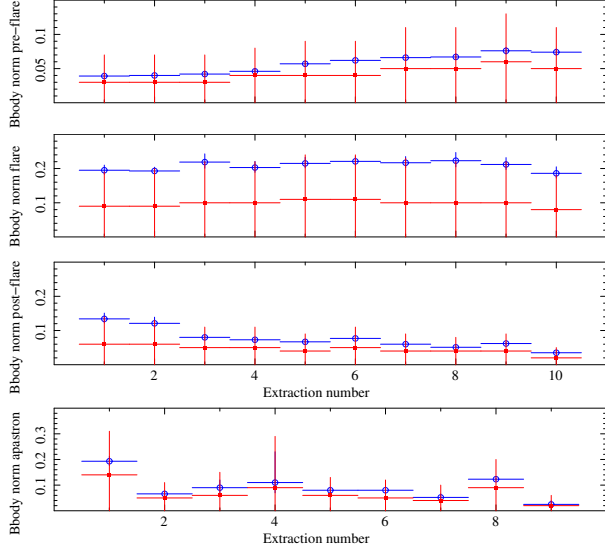


Fig. 12. Evolution of the *bbody* norm for the pre-periastron flare and apastron outbursts versus the extraction number (MAXI/GSC data, model defined by equation 6). *Top panel*: pre-flare. *Second panel*: flare. *Third panel*: post-flare. *Bottom panel*: apastron outbursts. Filled red squares: *bbody* norm calculated by using L_{39}/D_{10}^2 . Open blue circles: *bbody* norm fit value. The color figure can be viewed online.

hanced in the sixth extraction, which is reflected in a drop of the emission radius (Figure 13). In the flare spectra, it is enhanced in the (5.5–6.5) keV range indicating an increase in the accretion rate which is reflected in a higher X-ray luminosity compared to pre- and post-flare. In the post-flare the temperature is approximately constant, (3.8–4.1) keV, between the third and the tenth extraction, but there is a large increase in the first and second extractions with a value ≈ 6.0 keV which is reflected in a clear decrease of the emission zone between $\approx (0.2\text{--}0.3)$ km.

In the flare the unabsorbed flux (Figure 15) has no significant evolution in the fitting energy range (2.0–20.0) keV, showing that the accretion rate is quite stable. The unabsorbed fluxes show opposite trends between the pre-flare (the flux increases) and the post-flare (the flux decreases) showing that the accretion rate has a different behaviour along the pre-periastron passage. A possible explanation for this would be that the absorbing matter is located in the line of sight between the observer and the neutron star in the post-flare ($N_H \gtrsim 2 \times 10^{23} \text{ cm}^{-2}$) and away from the line of sight in the pre-flare ($N_H < 2 \times 10^{23} \text{ cm}^{-2}$). Thus, it is confirmed that the distribution of circumstellar matter around the compact object is rather inhomogeneous during the

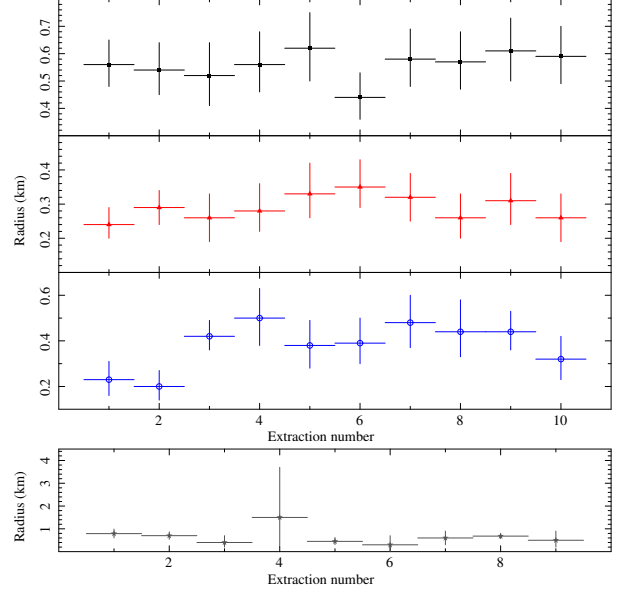


Fig. 13. Evolution of the radius of the emission zone for the pre-periastron flare and apastron outbursts versus the extraction number (MAXI/GSC data, model defined by equation 6). Filled black squares: pre-flare. Filled red triangles: flare. Open blue circles: post-flare. Filled dark grey stars: apastron outbursts. The color figure can be viewed online.

pre-periastron passage (Saraswat et al. 1996; Islam & Paul 2014).

The X-ray luminosity (Figure 16) is consistent with a constant value ($L_X \approx 1.3 \times 10^{37} \text{ erg s}^{-1}$) in the flare spectra (which agrees with the observations ID 0555200301 and ID 0555200401 from XMM-Newton) and is greater than in the pre-flare ($L_X = [4 - 7] \times 10^{36} \text{ erg s}^{-1}$) and in the post-flare ($L_X = [3 - 8] \times 10^{36} \text{ erg s}^{-1}$) spectra. This scenario, in which the wind mass-loss rate is insufficient to power the source entirely, indicates that an additional mechanism is needed to give the neutron star the fuel it needs. Wind-fed HMXBs are powered by accretion of the radiatively driven wind of the luminous component on the compact object with typical X-ray luminosities $\approx 10^{36} \text{ erg s}^{-1}$ (see Martínez-Núñez et al. 2017; Kretschmar et al. 2019, for instance), i.e. one order of magnitude smaller than observed in the flare event. A possible mechanism for enhancing the X-ray emission is thought to be the presence of a gas stream trailing the neutron star (Saraswat et al. 1996; Islam & Paul 2014). Another cause could be that an accretion disc has formed around the neutron star (Nabizadeh et al. 2019; Liu et al. 2021) or a combination of both possibilities (Saraswat et al. 1996). Spin-up episodes are usually characterised by an increase in X-ray lumi-

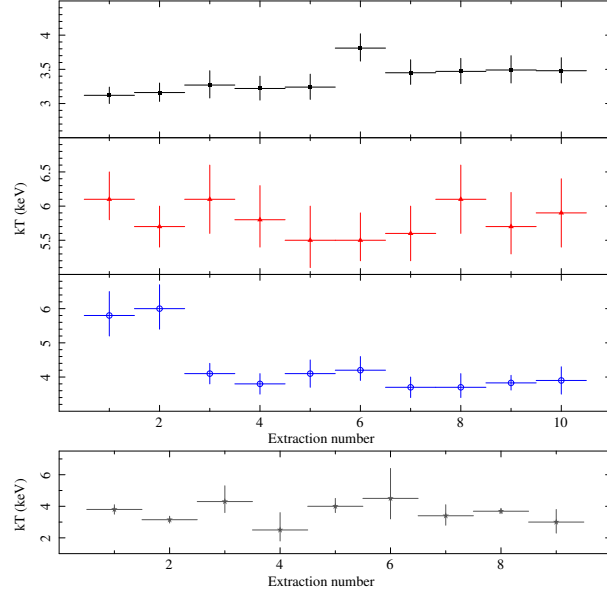


Fig. 14. Evolution of the bbody temperature for the pre-periastron flare and apastron outbursts versus the extraction number (*MAXI*/*GSC* data, model defined by equation 6). Filled black squares: pre-flare. Filled red triangles: flare. Open blue circles: post-flare. Filled dark grey stars: apastron outbursts. The color figure can be viewed online.

osity, associated with an enhancement of the accreted matter as a consequence of the formation of a temporary accretion disc around the neutron star (Nabizadeh et al. 2019; Manikantan et al. 2023).

This source is seen through a column density in the range $N_H = [10 - 40] \times 10^{22} \text{ cm}^{-2}$, and all X-rays below $[2 - 3] \text{ keV}$ are absorbed. At these column densities a feature due to the K edge of Fe at 7.1 keV should be present. Figure 17 shows the optical depth of the iron edge (τ_{Kedge}) best-fit parameter that lies in the range $[0.3 - 0.8]$. This represents an ionisation state of nearly neutral iron Fe I-V (if values reported by Saraswat et al. 1996; Endo et al. 2002; Ji et al. 2021, are taken into account).

The long-term averaged spectra in the flare section present a fluorescent iron emission line energy consistent with the Fe K α line and a constant value of $\approx (6.35 \pm 0.08) \text{ keV}$, as can be seen in Figure 18, top panel, which implies an ionisation state of iron up to Fe XVII. It was only detected in the first two spectra in the post-flare section and it was totally absent in the pre-flare section. However, Islam & Paul (2014) performed an orbital phase-resolved spectral analysis of GX 301-2 and they reported that the iron emission line was detected in all the orbital phases. The fitted values of the line width, the equivalent width and the intensity of the Fe K α emission line

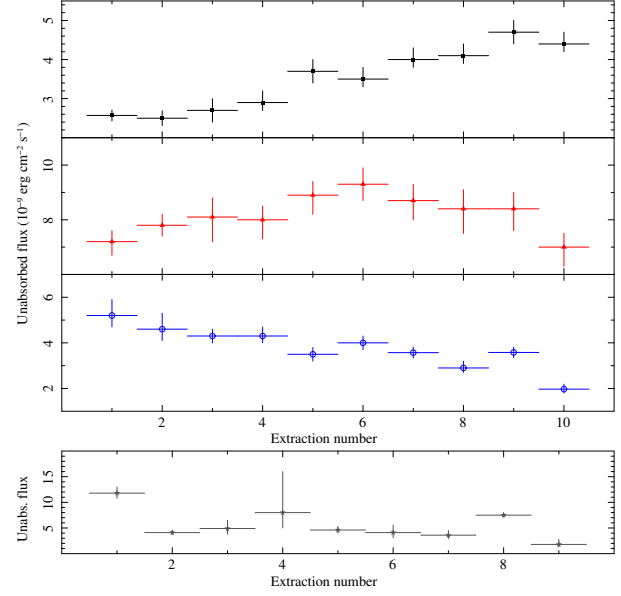


Fig. 15. Evolution of the unabsorbed flux for the pre-periastron flare and apastron outbursts (in units of $10^{-9} \text{ erg cm}^{-2} \text{ s}^{-1}$) versus the extraction number (*MAXI*/*GSC* data, model defined by equation 6). Filled black squares: pre-flare. Filled red triangles: flare. Open blue circles: post-flare. Filled dark grey stars: apastron outbursts. The color figure can be viewed online.

are plotted in Figure 18: second, third and bottom panels, respectively.

If the emission line luminosity is produced by a thin spherical shell of matter, i.e. a shell of gas surrounding a point source of continuum radiation with uniform ionisation, composition and density, the line equivalent width should be proportional to the column density (Kallman et al. 2004; Torrejón et al. 2010) $EW_{\text{line}}(\text{keV}) \simeq 0.3 N_H (10^{24} \text{ cm}^{-2})$. The absorbing component varies in the range $\approx [10 - 30] \times 10^{22} \text{ cm}^{-2}$ (see second panel from the top of Figure 19), which implies an equivalent width of Fe K α in the range $EW_{\text{line}} \approx [30 - 90] \text{ eV}$. On the other hand, for an isotropic surrounding cosmic fluorescing plasma, Inoue (1985) obtained a relationship between the expected equivalent width of the iron K α line and the hydrogen column density as $EW_{\text{expected}}(\text{eV}) = 100 N_H (10^{23} \text{ cm}^{-2})$ which is valid for $N_H < 10^{24} \text{ cm}^{-2}$ and a photon index of the power-law spectrum of 1.1 (see also Endo et al. 2002, for example). They also concluded that GX 301-2 corresponds to this case and, therefore, $EW_{\text{line}} \approx [100 - 300] \text{ eV}$. However, *MAXI*/*GSC* observations gave equivalent widths of the iron emission line in the range $EW_{\text{line}} \approx [600 - 1100] \text{ eV}$, which implies large deviations from the linear correlation. The largest value of the equivalent width

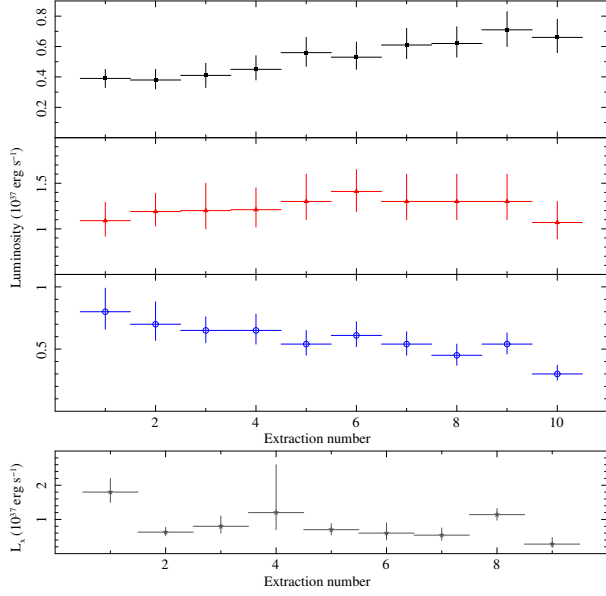


Fig. 16. Evolution of the luminosity for the pre-periastron flare and apastron outbursts versus the extraction number (MAXI/GSC data, model defined by equation 6). Filled black squares: pre-flare. Filled red triangles: flare. Open blue circles: post-flare. Filled dark grey stars: apastron outbursts. The color figure can be viewed online.

was obtained with the smallest column density. The fact that the Fe $K\alpha$ is not a single line but a superposition of different $K\alpha$ lines of differently strongly ionised iron together with the Compton shoulder at ≈ 6.24 keV and the wind speed could explain the large equivalent widths found in this study (Watanabe et al. 2003; Fürst et al. 2011; Ji et al. 2021). Taking the uncertainties into account, the best-fit parameters in the pre-periastron orbital phase are consistent with previous studies (Islam & Paul 2014; Manikantan et al. 2023). As a consequence, during the pre-periastron passage the fluorescent iron emission line is not emitted from a spherically symmetric distribution of matter surrounding the neutron star. Although this study has focused on flare episodes, a very small part of the orbit, these results are consistent with those obtained by Islam & Paul (2014).

Figure 20 shows the equivalent width of the Fe $K\alpha$ against the absorption column density during the pre-periastron passage compared with the theoretical predictions for an isotropically distributed gas and for a spherical shell of gas surrounding the source. In fact, it seems that there is a moderate anti-correlation between them during the pre-periastron passage and a Pearson correlation coefficient $r = -0.63$ was found. This result is in contrast to other studies, such as Makino et al. (1985), Endo

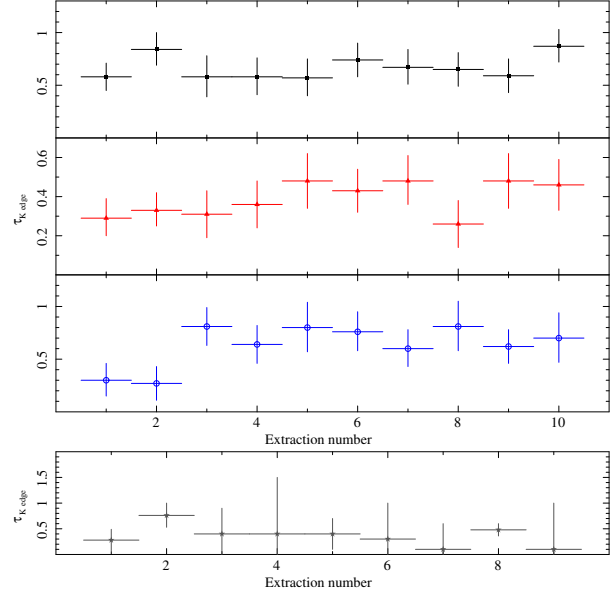


Fig. 17. Evolution of the optical depth of the edge for the pre-periastron flare and apastron outbursts versus the extraction number (MAXI/GSC data, model defined by equation 6). Filled black squares: pre-flare. Filled red triangles: flare. Open blue circles: post-flare. Filled dark grey stars: apastron outbursts. The color figure can be viewed online.

et al. (2002), Fürst et al. (2011), Ji et al. (2021), where they found a linear correlation between these two parameters which suggests that the accretion material near the neutron star is spherically distributed. Nevertheless, Ji et al. (2021) also found deviations from this linear correlation when the column density was higher than $1.7 \times 10^{24} \text{ cm}^{-2}$. They pointed out that this could be due to the formation of an accretion disc.

In Figure 21 the intensity of the Fe $K\alpha$ emission line is shown versus the unabsorbed flux of the source in the [2-20] keV energy band (left plot) and the optical depth of the iron K-edge absorption versus the equivalent width of the iron $K\alpha$ line (right plot). A moderate linear correlation (Pearson correlation coefficient $r = 0.63$) can be seen, which should be consistent with the expected line intensities for the hydrogen column densities derived from the model described by equation 6 (see fig.6b in Haberl 1991b, where the incident spectrum was assumed to be a power-law with photon index $\Gamma = 0.55$). In contrast, from the plot τ_{edge} versus EW, an anticorrelation relationship (Pearson correlation coefficient $r = -0.75$) seems to be present between these parameters during the pre-periastron passage. The solid line represents the linear fit found by Ji et al. (2021) where they suggested that the re-

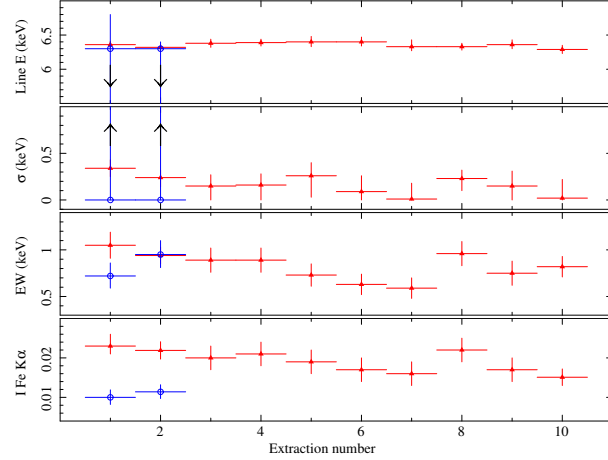


Fig. 18. The parameters of the Fe K α emission line versus the extraction number (MAXI/GSC data, model defined by equation 6). *Top panel*: line energy. *Second panel*: line width. *Third panel*: equivalent width. *Bottom panel*: intensity. The unit of the line flux I is photons $\text{s}^{-1} \text{cm}^{-2}$. Filled red triangles: flare. Open blue circles: post-flare. The color figure can be viewed online.

processed material reached an optical depth of unity for $\text{EW} \approx 400 \text{ eV}$ (see also Torrejón et al. 2010, where they also found a linear correlation).

3.2. Apastron Flare Spectra

The folded light curve of GX 301-2 shows two flare-like features at binary orbital phases ≈ 0.26 , i.e. before apastron passage (Haberl 1991b; Saraswat et al. 1996), and at ≈ 0.45 near-apastron passage (as can be seen in Figure 3, see also Pravdo et al. 1995; Pravdo & Ghosh 2001, for instance). In general, periodic near-apastron outbursts show lower intensity than the pre-periastron flare, although X-ray emission can sometimes be as low as $\approx 10^{36} \text{ erg s}^{-1}$, i.e. it cannot be distinguished from the baseline X-ray intensity along the orbit. Thus, the criterion to identify an apastron outburst was that the unabsorbed X-ray flux was greater than $\approx 2 \times 10^{-9} \text{ erg s}^{-1} \text{cm}^{-2}$. The orbital phase of the apastron outbursts was also obtained with the parameters reported by Koh et al. (1997). Then, the Good Time Intervals (GTIs) were derived and the corresponding MJDs are listed in the caption of Figure 22. Finally, the spectra were extracted following the process explained in § 3.1.

In this analysis, all apastron spectra were fitted with the same model used for the pre-periastron flare spectra. The range of the χ_r^2 values was $[0.7 - 1.2]$ for all fits. Nevertheless, it should be noted that no Gaussian component has been included here because the fluorescent iron emission line was not detected by

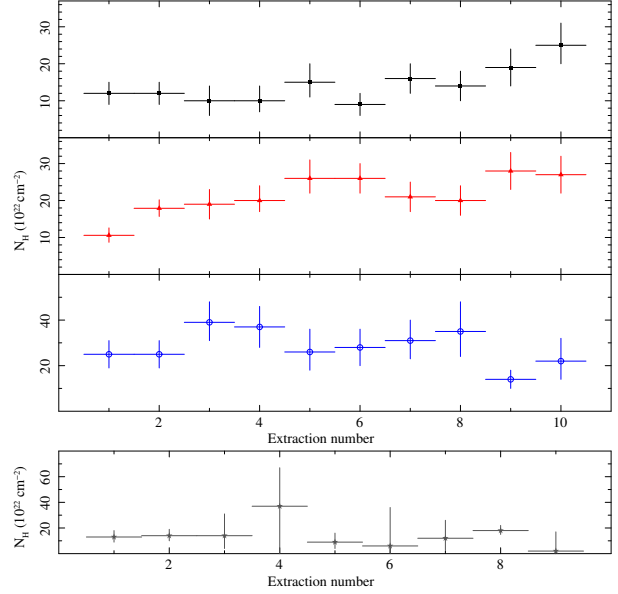


Fig. 19. Evolution of the column density for the pre-periastron, flare, and apastron outbursts versus the extraction number (MAXI/GSC data, model defined by equation 6). Filled black squares: pre-flare. Filled red triangles: flare. Open blue circles: post-flare. Filled dark grey stars: apastron outbursts. The color figure can be viewed online.

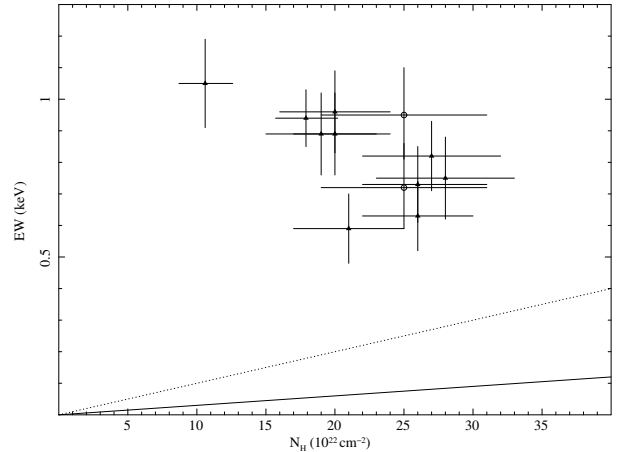


Fig. 20. Variability of the equivalent width as a function of the column density (also known as the curve of growth). Filled black triangles: flare. Open black circles: post-flare. The dotted line represents the relation for an isotropic surrounding cosmic fluorescing plasma, $\text{EW}_{\text{expected}}(\text{eV}) = 100 N_H (10^{23} \text{ cm}^{-2})$ (Inoue 1985). The solid line shows the relation for the luminosity produced by a thin spherical shell of matter $\text{EW}_{\text{line}}(\text{keV}) \approx 0.3 N_H (10^{24} \text{ cm}^{-2})$ (Kallman et al. 2004; Torrejón et al. 2010).

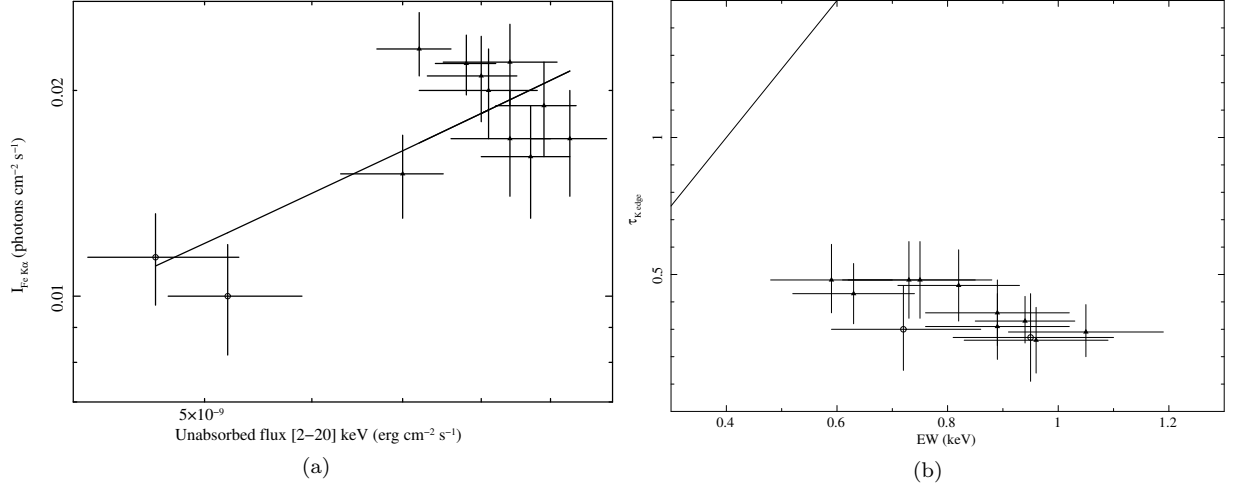


Fig. 21. *Left panel:* Log-log plot of the Fe K α intensity as a function of the unabsorbed flux in the (2–20) keV energy band. The solid line represents a linear fit. *Right panel:* Plot of the optical depth of the iron K-edge absorption as a function of the equivalent width of the iron K α line (in keV). The solid line is the linear fit found by Ji et al. (2021). An apparent anti-correlation can be seen during the pre-periastron passage. The larger the EW of the Fe K α , the smaller the optical depth of the iron K-edge absorption. Filled black triangles: flare. Open black circles: post-flare.

TABLE 4
SELECTED FIT PARAMETERS FROM APASTRON FLARE SPECTRA

Extraction Number	MJDs [Orbital Phase]	R_{bb} (km)	K_{bb} [L_{39}/D_{10}^2]	Bbody norm fit value	$L_X(2.0-20.0\text{ keV})$ ($10^{37} \text{ erg s}^{-1}$)
1	55376.5–55380.5 [0.41–0.51]	$0.79^{+0.20}_{-0.19}$	$0.14^{+0.17}_{-0.15}$	$0.193^{+0.019}_{-0.017}$	$1.8^{+0.4}_{-0.3}$
2	55710.0–55713.0 [0.45–0.52]	$0.70^{+0.17}_{-0.16}$	$0.05^{+0.06}_{-0.05}$	$0.066^{+0.007}_{-0.006}$	$0.63^{+0.14}_{-0.11}$
3	55870.0–55873.0 [0.30–0.37]	$0.4^{+0.3}_{-0.2}$	$0.06^{+0.09}_{-0.07}$	$0.09^{+0.03}_{-0.02}$	$0.8^{+0.3}_{-0.2}$
4	56163.5–56164.5 [0.38–0.40]	$1.5^{+2.2}_{-1.2}$	$0.09^{+0.20}_{-0.13}$	$0.11^{+0.12}_{-0.04}$	$1.2^{+1.4}_{-0.5}$
5	57285.0–57288.0 [0.40–0.47]	$0.45^{+0.17}_{-0.14}$	$0.06^{+0.07}_{-0.06}$	$0.080^{+0.012}_{-0.010}$	$0.70^{+0.18}_{-0.15}$
6	57454.0–57457.0 [0.47–0.55]	$0.3^{+0.4}_{-0.3}$	$0.05^{+0.07}_{-0.06}$	$0.08^{+0.03}_{-0.02}$	$0.6^{+0.3}_{-0.2}$
7	58029.5–58041.5 [0.34–0.63]	0.6 ± 0.3	$0.04^{+0.06}_{-0.05}$	$0.052^{+0.014}_{-0.010}$	$0.54^{+0.21}_{-0.15}$
8	58480.5–58495.5 [0.21–0.57]	0.68 ± 0.11	$0.09^{+0.11}_{-0.09}$	0.123 ± 0.006	$1.14^{+0.18}_{-0.16}$
9	59119.0–59122.0 [0.60–0.67]	$0.5^{+0.4}_{-0.3}$	$0.02^{+0.04}_{-0.03}$	$0.025^{+0.014}_{-0.007}$	$0.28^{+0.19}_{-0.10}$

MAXI/GSC. Figure 22 shows the data, the absorbed blackbody modified by the iron K-edge absorption best-fit model (top panels), and the residuals for the model (bottom panels). The best-fit model parameters are plotted in Figures 12–17 and 19, bottom panels.

The unabsorbed fluxes and the derived radii of the blackbody emission region are shown in Figures 15 and 13, respectively. The results for the radii are consistent with a hot spot on the NS surface (Sanjurjo-Ferrín et al. 2021; Torregrosa et al. 2022) (see Table 4, Column 3).

Using the definition of the *bbody normalisation* $K_{\text{bb}} = L_{39}/D_{10}^2$, we have derived its value in the nine spectra (see Table 4, Column 4). These values are consistent with those obtained from fitting the model

$F(E) = tb_{\text{new}} \times b_{\text{body}} \times \text{edge}$, taking the uncertainties into account (see Figure 12, bottom panel).

The first apastron outburst spectrum observed by MAXI/GSC is shown in Figure 22 (a) whose X-ray luminosity, see Table 4, Column 6, ($L_{X(a)} \approx 2 \times 10^{37}$) was unusually brighter than that of pre-periastron flare (see Figure 16 and compare second and bottom panels). This flare was also detected by *Fermi*/GBM and could be associated with a rapid spin-up episode of GX 301-2 (Finger et al. 2010). According to the long-term light curve obtained with *Fermi*/GBM, rapid spin-up began on June 23, 2010 (MJD 55370.84) and finished on July 22, 2010 (MJD 55399.07), as can be seen in Figure 8. Pulse timing measurements for the interval June 23.8–July 22.1 showed a spin-up fre-

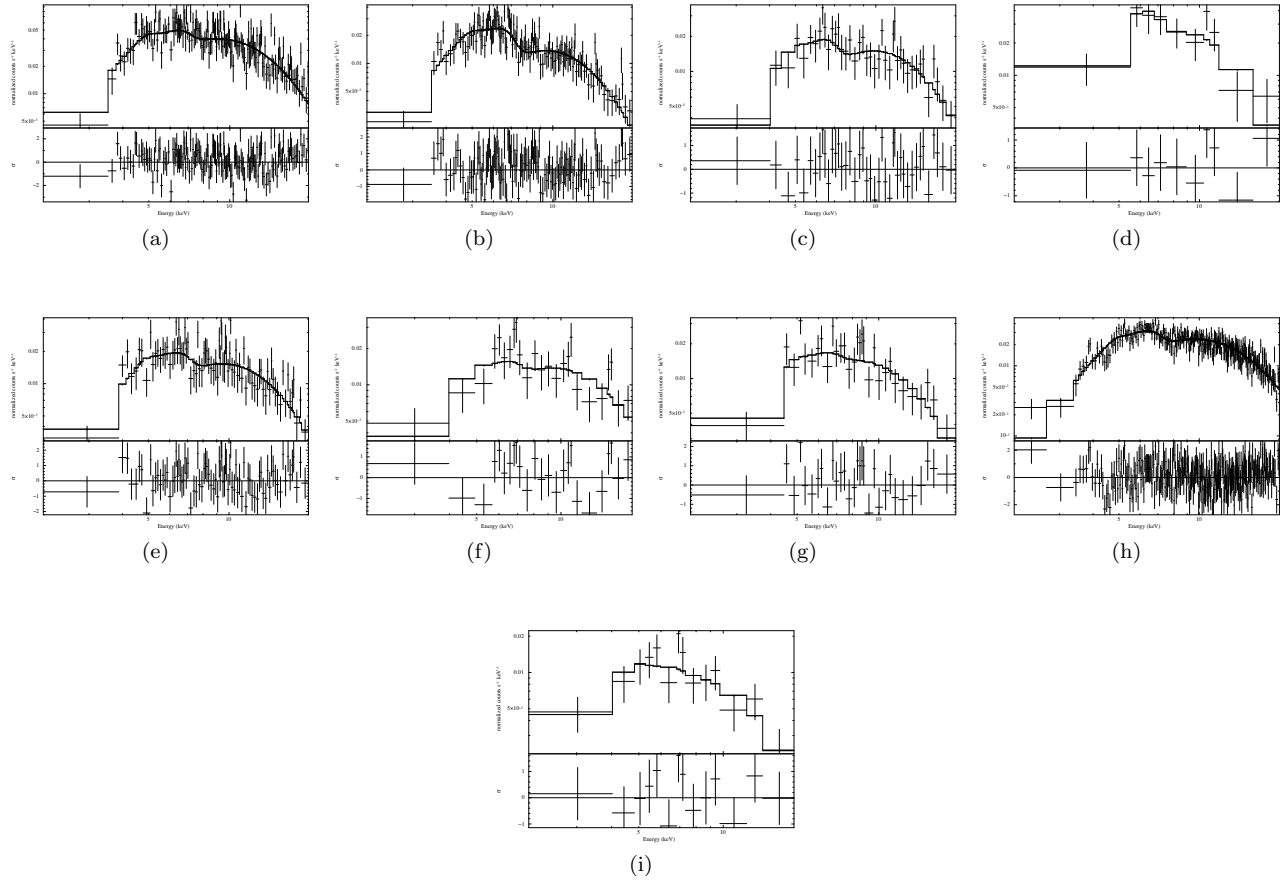


Fig. 22. MAXI/GSC spectra of GX 301-2 in the [2.0–20.0] keV band corresponding to the apastron flare. MJDs from left to right for each spectrum: (a) [55376.5–55380.5], (b) [55710.0–55713.0], (c) [55870.0–55873.0], (d) [56163.5–56164.5], (e) [57285.0–57288.0], (f) [57454.0–57457.0], (g) [58029.5–58041.5], (h) [58480.5–58495.5] and (i) [59119.0–59122.0]. Units of the x -axis: Energy (keV). Units of the y -axis: Normalized counts $s^{-1} \text{ keV}^{-1}$.

quency rate of $\dot{\nu}_{\text{spin}} = (3.89 \pm 0.08) \times 10^{-12} \text{ Hz/s}$, giving a spin-up time scale of $\approx 12 \text{ yr}$. This extracted spectrum covered only 1/7 of the spin-up episode with an spin-up frequency rate of $\dot{\nu}_{\text{spin}} = (6.21 \pm 0.21) \times 10^{-12} \text{ Hz/s}$. The following apastron flare with an X-ray luminosity similar to the pre-periastron flare is shown in Figure 22 (d) and was not associated with any significant changes in the spin period of the neutron star (the spin frequency decreased from $\nu_1 = (1.46861 \pm 0.00017) \times 10^{-3} \text{ Hz}$ on MJD 55 611.1160 to $\nu_2 = (1.46818 \pm 0.00018) \times 10^{-3} \text{ Hz}$ on MJD 55 616.9968). The last one studied in this work corresponded to the eighth extraction, Figure 22 (h), where the source presented a new rapid spin-up event (Abarr et al. 2020; Liu et al. 2021; Manikantan et al. 2023). In this case, during the observation the spin frequency increase

from $\nu_1 = (1.467459 \pm 0.000011) \times 10^{-3} \text{ Hz}$ on MJD 58 485.1001 to $\nu_2 = (1.472308 \pm 0.000007) \times 10^{-3} \text{ Hz}$ on MJD 58 494.9950 at a rate of $\dot{\nu}_{\text{spin}} = (5.75 \pm 0.02) \times 10^{-12} \text{ Hz/s}$, which is near to the spin frequency increase over 18 days (MJD 58 485.1001–58 502.9107) $\dot{\nu}_{\text{spin}} = (5.70 \pm 0.02) \times 10^{-12} \text{ Hz/s}$. Then, the spin frequency rose over 24 days (MJD 58 502.9107–58 553.1933) at a rate of $\dot{\nu}_{\text{spin}} = (2.37 \pm 0.18) \times 10^{-12} \text{ Hz/s}$.

Another rapid spin-up episode seen with *Fermi*/GBM from MJD 54 830.9617 to MJD 54 855.1007 showed a spin-up frequency rate of $\dot{\nu}_{\text{spin}} = (2.97 \pm 0.12) \times 10^{-12} \text{ Hz/s}$ (Finger et al. 2010). Moreover, similar spin-up events were detected with the Burst And Transient Source Experiment (BATSE) and reported by Koh et al. (1997); Bildsten et al. (1997). They found a spin fre-

quency growth over 23 days at a rate of $\dot{\nu}_{\text{spin}} = 4.5 \times 10^{-12}$ Hz/s and over 15 days at a rate of $\dot{\nu}_{\text{spin}} = 3.0 \times 10^{-12}$ Hz/s.

The rest of the apastron flares shown in Figures 22 (b), (c), (e), (f), (g) and (i) had an X-ray emission slightly lower than pre-periastron flares which were not associated with any significant changes in the spin period of the neutron star. From MJD 55 708.9521 to MJD 55 714.8995, the spin-up rate was $\dot{\nu}_{(b)} = (1.1 \pm 0.6) \times 10^{-12}$ Hz/s; from MJD 55 860 to 55 875 only two pulse timing measurements were taken, MJD 55 871.1393 and 55 873.1066, which gave a spin-down rate of $\dot{\nu}_{(c)} = (-1.9 \pm 1.4) \times 10^{-12}$ Hz/s; from MJD 57 265.2712 to MJD 57 290.7870, the spin-up rate was $\dot{\nu}_{(e)} = (9.8 \pm 0.8) \times 10^{-13}$ Hz/s (although this time interval had a gap without measurements MJD 57 273–57 286); from MJD 57 449.0139 to 57 458.9447 the spin-down rate was $\dot{\nu}_{(f)} = (-1.1 \pm 0.3) \times 10^{-12}$ Hz/s; from MJD 58 028.9070 to MJD 58 036.7733, the spin-up rate was $\dot{\nu}_{(g)} = (1.0 \pm 0.7) \times 10^{-12}$ Hz/s (but before and after there was a gap of 10 days without pulse measurements); and from MJD 59 117.1258 to MJD 59 121.0794, the spin-up rate was $\dot{\nu}_{(g)} = (2.4 \pm 1.1) \times 10^{-12}$ Hz/s.

As far as it is known from the rapid spin-episodes in GX 301-2, during the apastron passage the source becomes as bright as a pre-periastron flare, as a consequence of the formation of a transitory accretion disc. Thus, the mass transfer from the companion star to the neutron star is a rather irregular process during this orbital phase (see X-ray luminosities in Table 4). The strongest events show that the material is accreted from the stellar wind, possibly from a gas stream (Leahy & Kostka 2008) and probably through a temporary accretion disc (Koh et al. 1997; Nabizadeh et al. 2019; Abarr et al. 2020; Liu et al. 2021; Manikantan et al. 2023). However, the fourth apastron flare [see extraction number 4 in Table 4 and Figure 22 (d)] did not show a spin-up of the neutron star and no transitory disc was formed. Therefore, the material should be accreted by the stellar wind and possibly from a gas stream.

It should be noted that the fluorescence iron emission line at ≈ 6.4 keV has not been detected in any spectrum of the apastron flare. Sensitive X-ray observatories such as ASCA (Endo et al. 2002), XMM-Newton (Giménez-García et al. 2015), and Chandra (Torrejón et al. 2010) detected and resolved the iron line complex in GX 301-2. In contrast, MAXI/GSC does not have enough sensitivity to distinguish between a weak, broad iron K α emission line and a bright X-ray continuum (Rodes-Roca et al.

2015; Torregrosa et al. 2022). Nevertheless, other long-term orbital phase resolved spectroscopy studies reported the presence of the Fe K α line in all orbital phases (Islam & Paul 2014; Manikantan et al. 2023).

4. SUMMARY AND CONCLUSIONS

The main goal of the current study was to determine the long-term variation of GX 301-2 in the pre-periastron and apastron flares. The Good Time-Intervals corresponding to these orbital phases were generated using the orbital ephemeris from Koh et al. (1997).

The main results can be summarise as follows:

- From the analysis of the MAXI/GSC (4.0–10.0) keV light curve, we have estimated the orbital period of the binary system, $P_{\text{orb}} = 41.4 \pm 0.5$ days, being in agreement with the best value derived by Koh et al. (1997).
- Two variations of the model $tbnew \times po + tbnew \times po + GL$ have been applied to find if there was elliptical polarisation due to synchrotron radiation. This model was not able to describe all MAXI/GSC data properly.
- The size of the emitting region on the neutron star surface in the pre-periastron and apastron flares obtained using the *bbody normalisation* (see Figure 13 and Table 4) was compatible with a hot spot. The temperature of the blackbody is in the range [5.1–6.7] keV during the pre-periastron flare and two post-flare, but lower than 5.0 keV in the rest of the spectra. It was not clear if there is a connection between the high temperature of the blackbody and the detection of the iron K α line.
- The X-ray luminosity during the pre-periastron flare was compatible with a constant value ($L_X \approx 1.3 \times 10^{37}$ erg s $^{-1}$) indicating an accretion rate quite regular from the stellar wind and a gas stream trailing the neutron star (Leahy & Kostka 2008). This mass transfer model would also explain the X-ray luminosities obtained in the pre-flare ($L_X = [4 - 7] \times 10^{36}$ erg s $^{-1}$), in the post-flare ($L_X = [3 - 8] \times 10^{36}$ erg s $^{-1}$) and in most of the apastron flares ($L_X = [3 - 8] \times 10^{36}$ erg s $^{-1}$). However, two of the strongest apastron flares had an X-ray luminosity comparable to the pre-periastron flare during rare spin-up events. It is believed that a certain amount of angular momentum should be transported through the formation of an accretion disc at this orbital phase (Nabizadeh et al. 2019; Abarr et al. 2020; Manikantan et al. 2023). At least one of the largest apastron flares (extraction number 4 in Table 4) was not related to a spin-up episode and, therefore, it is

quite likely that a transient accretion disc did not form. Consequently, it remains unknown why only some apastron flares spin up the X-ray source and on what this depends.

– The curve of growth showed a moderate anti-correlation between the equivalent width of Fe $K\alpha$ and the column density, and clear deviations from spherically distributed absorbing matter (Kallman et al. 2004; Islam & Paul 2014; Giménez-García et al. 2015; Ji et al. 2021) in the pre-periastron flare. On the other hand, a moderate correlation between the unabsorbed X-ray flux and the intensity of Fe $K\alpha$ was found, which could be consistent with the expected values corresponding to the hydrogen column densities in the pre-periastron flare (see Figure 6b in Haberl 1991b).

– The optical depth of the K-edge absorption was moderately anti-correlated to the equivalent width of Fe $K\alpha$, and clearly deviated from the linear correlation reported by Ji et al. (2021) (see also the result obtained by Torrejón et al. 2010).

This research made use of MAXI data provided by RIKEN, JAXA and MAXI team. JJRR acknowledges the support by the Matsumae International Foundation Research Fellowship No14G04, and also thanks the entire MAXI team for their collaboration and hospitality in RIKEN. We would like to thank particularly T. Mihara and S. Nakahira for invaluable assistance in analysing MAXI data. GSF, JMT & JJRR acknowledge the financial support from the MCIN with funding from the European Union NextGenerationEU (PRTR-C17.I01) and Generalitat Valenciana Proj. (Athena-XIFU-UA), ref. ASFAE/2022/002. This work has made use of data from the European Space Agency (ESA) mission Gaia (<https://www.cosmos.esa.int/gaia>), processed by the Gaia Data Processing and Analysis Consortium (DPAC, <https://www.cosmos.esa.int/web/gaia/dpac/consortium>). Funding for the DPAC has been provided by national institutions, in particular the institutions participating in the Gaia Multilateral Agreement. We thank the anonymous referee for the constructive comments that helped us to improve the manuscript.

REFERENCES

- Abarr, Q., Baring, M., Beheshtipour, B., et al. 2020, *ApJ*, 891, 70, <https://doi.org/10.3847/1538-4357/ab672cz>
- Arnaud, K. A. 1996, ASPC 101, *Astronomical Data Analysis and Systems*, ed. G. H. Jacoby & J. Barnes, 17
- Astropy Collaboration, Price-Whelan, A. M., Lim, P. L., et al. 2022, *ApJ*, 935, 167, <https://doi.org/10.3847/1538-4357/ac7c74>
- Bailer-Jones, C. A. L., Rybizki, J., Fouesneau, M., Demleitner, M., & Andrae, R. 2021, *AJ*, 161, 147, <https://doi.org/10.3847/1538-3881/abd806>
- Bildsten, L., Chakrabarty, D., Chiu, J., et al. 1997, *ApJS*, 113, 367, <https://doi.org/10.1086/313060>
- Ebisawa, K., Day, C. S. R., Kallman, T. R., et al. 1996, *PASJ*, 48, 425, <https://doi.org/10.1093/pasj/48.3.425>
- Endo, T., Ishida, M., Masai, K., et al. 2002, *ApJ*, 574, 879, <https://doi.org/10.1086/341060>
- Finger, M. H., Beklen, E., Narayana Bhat, P., et al. 2009, *arXiv:0912.3847*, <https://doi.org/10.48550/arXiv.0912.3847>
- Finger, M. H., Camero-Arranz, A., Wilson-Hodge, C., & Jenke, P. 2010, *ATel*, 2712, 1
- Fürst, F., Suchy, S., Kreykenbohm, I., et al. 2011, *A&A*, 535, 9, <https://doi.org/10.1051/0004-6361/201117665>
- Giménez Cañete, A. & Castro Tirado, A. 2005, *Astronomía X (Equipo Sirius)*, Madrid
- Giménez-García, A., Torrejón, J. M., Eikmann, W., et al. 2015, *A&A*, 576, 108, <https://doi.org/10.1051/0004-6361/201425004>
- Haberl, F. 1991a, *A&A*, 252, 272
- . 1991b, *ApJ*, 376, 245
- Han, I. & Demir, L. 2009, *PhRvA*, 80, 052503, <https://doi.org/10.1103/PhysRevA.80.052503>
- Inoue, H. 1985, *SSSRv*, 40, 317, <https://doi.org/10.1007/BF00212905>
- Islam, N. & Paul, B. 2014, *MNRAS*, 441, 2539, <https://doi.org/10.1093/mnras/stu756>
- Ji, L., Doroshenko, V., Suleimanov, V., et al. 2021, *MNRAS*, 501, 2522, <https://doi.org/10.1093/mnras/staa3788>
- Kallman, T. R., Palmeri, P., Bautista, M. A., Mendoza, C., & Krolik, J. H. 2004, *ApJS*, 155, 675, <https://doi.org/10.1086/424039>
- Kaper, L., Lamers, H. J. G. L. M., Ruymaekers, E., van den Heuvel, E. P. J., & Zuiderwijk, E. J. 1995, *A&A*, 300, 446
- Kaper, L., van der Meer, A., & Najarro, F. 2006, *A&A*, 457, 595, <https://doi.org/10.1051/0004-6361:20065393>
- Koh, D. T., Bildsten, L., Chakrabarty, D., et al. 1997, *ApJ*, 479, 933, <https://doi.org/10.1086/303929>
- Kretschmar, P., Fürst, F., Sidoli, L., et al. 2019, *NewAR*, 86, 101546, <https://doi.org/10.1016/j.newar.2020.101546>
- La Barbera, A., Segreto, A., Santangelo, A., Kreykenbohm, I., & Orlandini, M. 2005, *A&A*, 438, 617, <https://doi.org/10.1051/0004/6361:20041509>
- Leahy, D. A. 1991, *MNRAS*, 250, 310, <https://doi.org/10.1093/mnras/250.2.310>
- Leahy, D. A. & Kostka, M. 2008, *MNRAS*, 384, 747, <https://doi.org/10.1111/j.1365-2966.2007.>

- 12754.x
- Leahy, D. A., Matsuoka, M., Kawai, N., & Makino, F. 1989, MNRAS, 236, 603, <https://doi.org/10.1093/mnras/236.3.603>
- Leahy, D. A., Nakajo, M., Matsuoka, M., et al. 1988, PASJ, 40, 197
- Lewin, W. H. G., McClintock, J. E., Ryckman, S. G., & Smith, W. B. 1971, ApJ, 166, 69, <https://doi.org/10.1086/180741>
- Liu, J., Ji, L., Jenke, P. A., et al. 2021, MNRAS, 504, 2493, <https://doi.org/10.1093/mnras/stab938>
- Makino, F., Leahy, D. A., & Kawai, N. 1985, Space Sci. Rev., 40, 421, <https://doi.org/10.1007/BF00179851>
- Malacaria, C., Jenke, P., Roberts, O. J., et al. 2020, ApJ, 896, 90, <https://doi.org/10.3847/1538-4357/ab855c>
- Manikantan, H., Paul, B., Roy, K., & Rana, V. 2023, MNRAS, 520, 1411, <https://doi.org/10.1093/mnras/stad037>
- Martínez-Núñez, S., Kretschmar, P., Bozzo, E., et al. 2017, Space Sci. Rev., 212, 59, <https://doi.org/10.1007/s11214-017-0340-1>
- McClintock, J. E., Ricker, G. R., & Lewin, W. H. G. 1971, ApJ, 166, 73, <https://doi.org/10.1086/180742>
- Mukherjee, U. & Paul, B. 2004, A&A, 427, 567, <https://doi.org/10.1051/0004-6361:20034407>
- Nabizadeh, A., Mönkkönen, J., Tsygankov, S. S., et al. 2019, A&A, 629, 101, <https://doi.org/10.1051/0004-6361/201936045>
- Pravdo, S. H., Day, C. S. R., Angelini, L., et al. 1995, ApJ, 454, 872, <https://doi.org/10.1086/176540>
- Pravdo, S. H. & Ghosh, P. 2001, ApJ, 554, 383, <https://doi.org/10.1086/321350>
- Press, W. H. & Rybicki, G. B. 1989, ApJ, 338, 277, <https://doi.org/10.1086/167197>
- Rodes-Roca, J. J., Mihara, T., Nakahira, S., et al. 2015, A&A, 580, 140, <https://doi.org/10.1051/0004-6361/201425323>
- Roy, K., Manikantan, H., & Paul, B. 2024, MNRAS, 527, 2652, <https://doi.org/10.1093/mnras/stad3395>
- Sanjurjo-Ferrín, G., Torrejón, J. M., Postnov, K., et al. 2021, MNRAS, 501, 5892, <https://doi.org/10.1093/mnras/staa3953>
- Saraswat, P., Yoshida, A., Mihara, T., et al. 1996, ApJ, 463, 726, <https://doi.org/10.1086/177285>
- Sato, N., Nagase, F., Kawai, N., et al. 1986, ApJ, 304, 241, <https://doi.org/10.1086/164157>
- Stevens, I. R. 1988, MNRAS, 232, 199, <https://doi.org/10.1093/mnras/232.1.199>
- Suchy, S., Fürst, F., Pottschmidt, K., et al. 2012, ApJ, 745, 124, <https://doi.org/10.1088/0004-637X/745/2/124>
- Torregrosa, Á., Rodes-Roca, J. J., Torrejón, J. M., Sanjurjo-Ferrín, G., & Bernabéu, G. 2022, RMxAA, 58, 355, <https://doi.org/10.22201/ia.01851101p.2022.58.02.15>
- Torrejón, J. M., Schulz, N. S., Nowak, M. A., & Kallman, T. R. 2010, ApJ, 715, 947, <https://doi.org/10.1088/0004-637X/715/2/947>
- Watanabe, S., Sako, M., Ishida, M., et al. 2003, ApJ, 597, 37, <https://doi.org/10.1086/379735>
- White, N. E., Mason, K. O., Huckle, H. E., Charles, P. A., & Sanford, P. W. 1976, ApJ, 209, 119, <https://doi.org/10.1086/182281>
- Wilms, J., Allen, A., & McCray, R. 2000, ApJ, 542, 914, <https://doi.org/10.1086/317016>

- T. Mihara: MAXI team, Institute of Physical and Chemical Research (RIKEN), 2-1 Hirosawa, Wako, Saitama 351-0198, Japan.
- M. Nakajima: Nihon University School of Dentistry at Matsudo 2-870-1 Sakae-cho Nishi, Matsudo-shi, Chiba 271-8587, Japan.
- J. J. Rodes-Roca and J. M. Torrejón: Department of Physics, Systems Engineering and Signal Theory, University of Alicante, 03080 Alicante, Spain.
- M. Sugizaki: Science and Engineering, Kanazawa University, Kakuma, Kanazawa, Ishikawa 920-1192, Japan.
- Á. Torregrosa, J. J. Rodes-Roca, J. M. Torrejón and G. Sanjurjo-Ferrín: University Institute of Physics Applied to Sciences and Technologies, University of Alicante, 03080 Alicante, Spain (aat34@alu.ua.es).