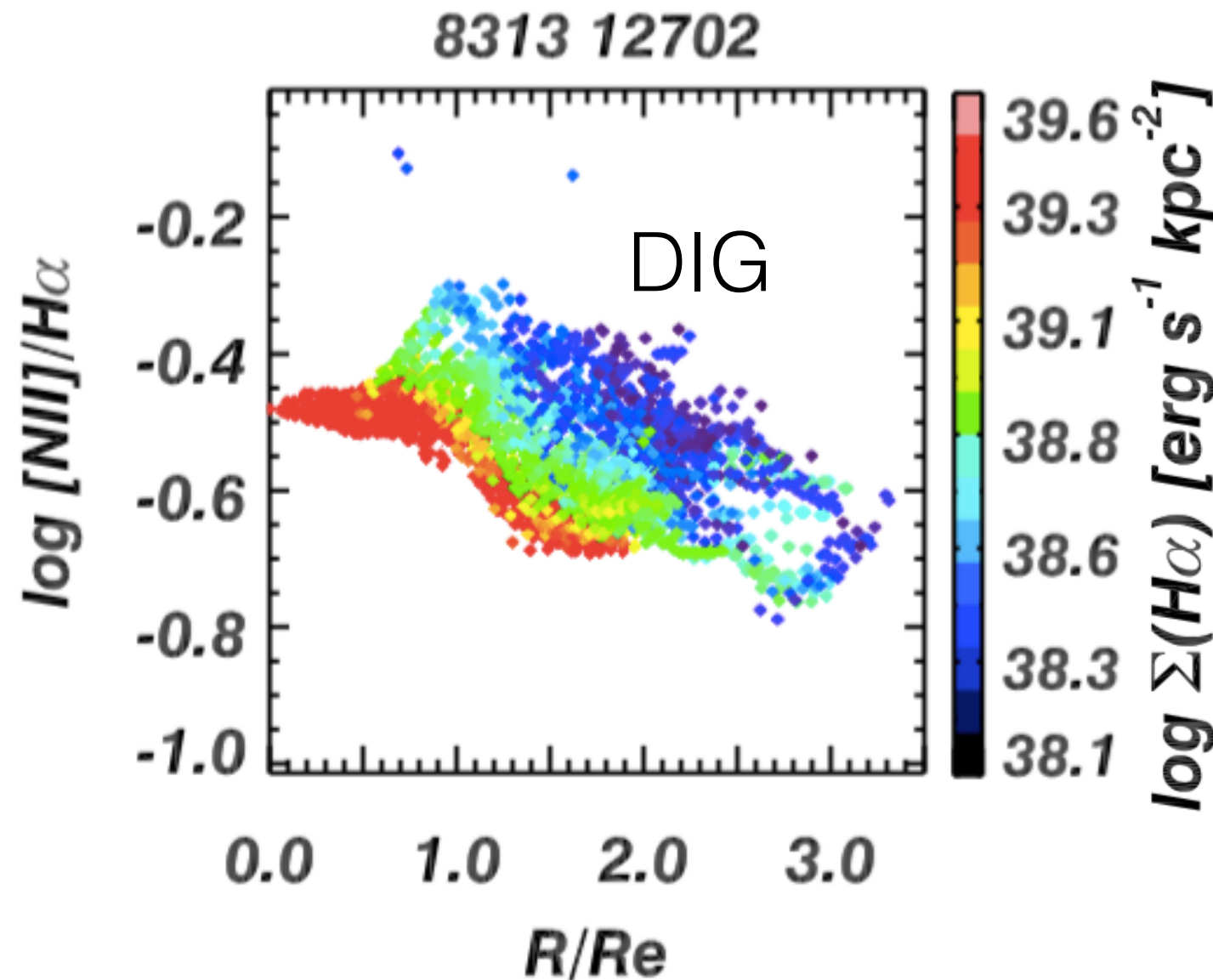


The Impact of Diffuse Ionized Gas on Emission-Line Ratios, Interpretation of Diagnostic Diagrams, and Gas Metallicity Measurements

Poster #59



Rainbow pattern for $[NII]/H\alpha$, $[SII]/H\alpha$, $[OII]/H\beta$, $[OI]/H\alpha$, and $[OIII]/[OII]$ in almost **every** star-forming galaxy.

We have measured how DIG would impact various metallicity indicators, and we have ruled out leaky HII regions to be the major ionizing source based on diagnostic diagrams.

