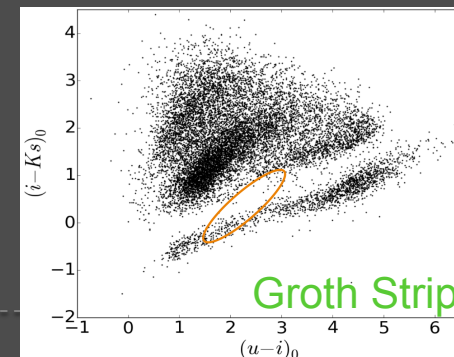
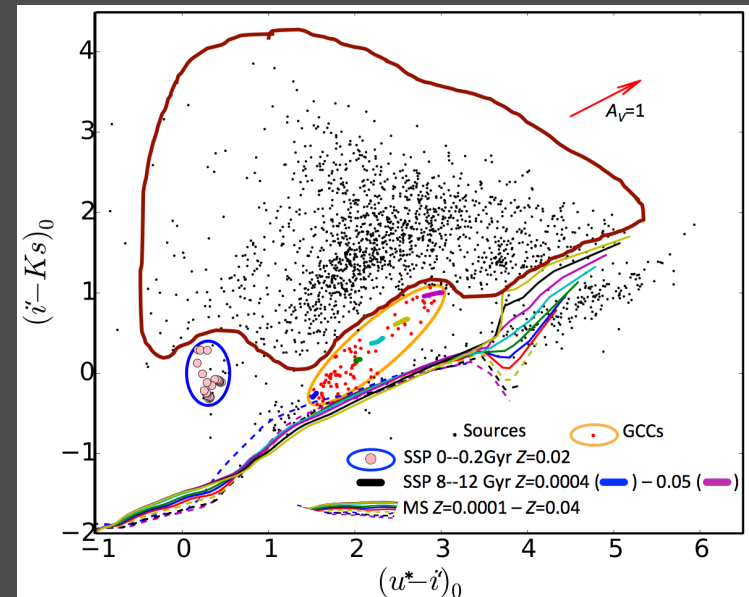
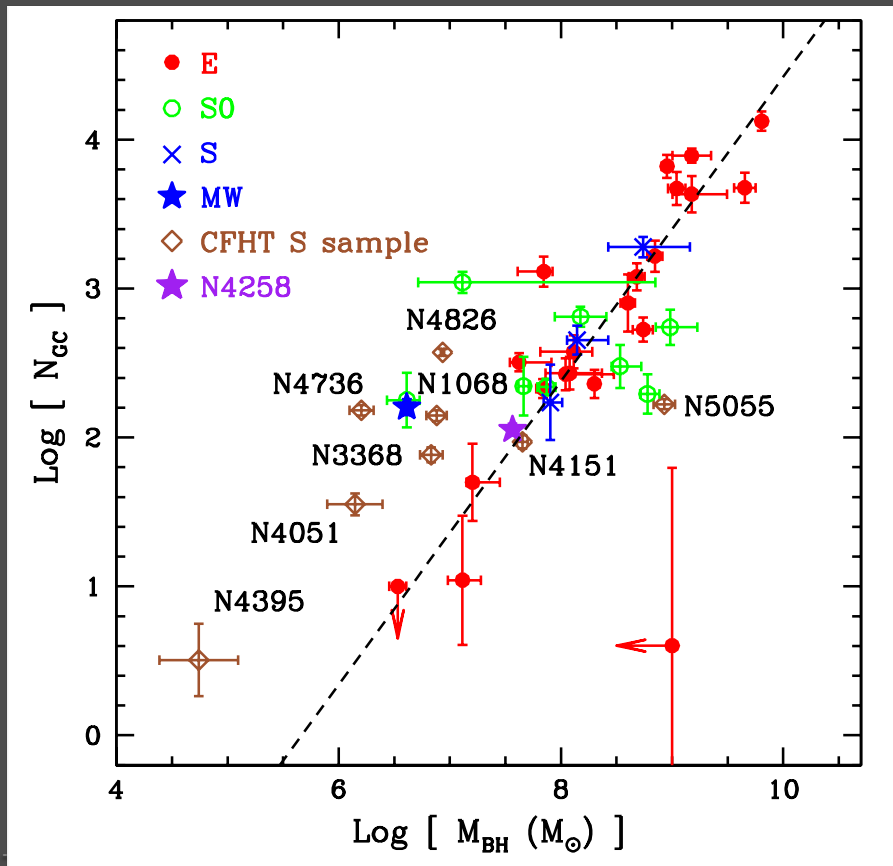


# The $N_{GC}$ vs. $M_{\bullet}$ relation for spirals: N4258

R.A. González-Lópezlira et al.

POSTER #4



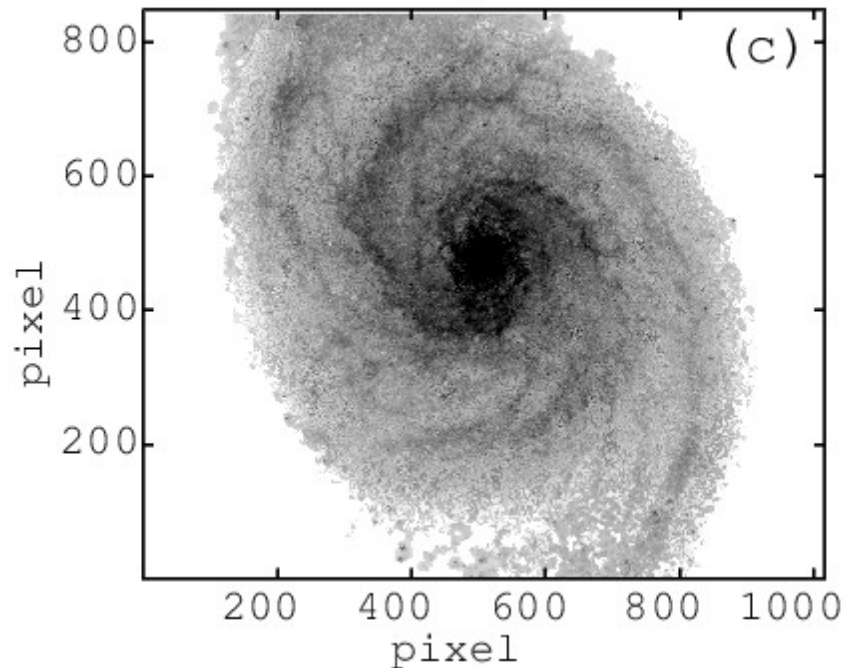
# Resolved maps of stellar mass from iterative Bayesian marginalization of SPS models

Eric Martínez-García et al.

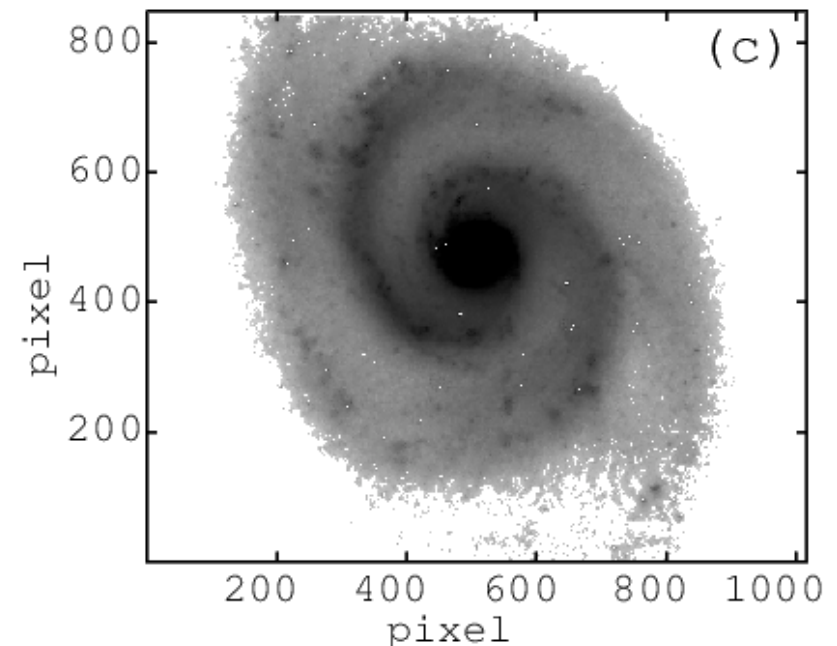
POSTER #73



Mass map (ZCR)



BSP Mass map

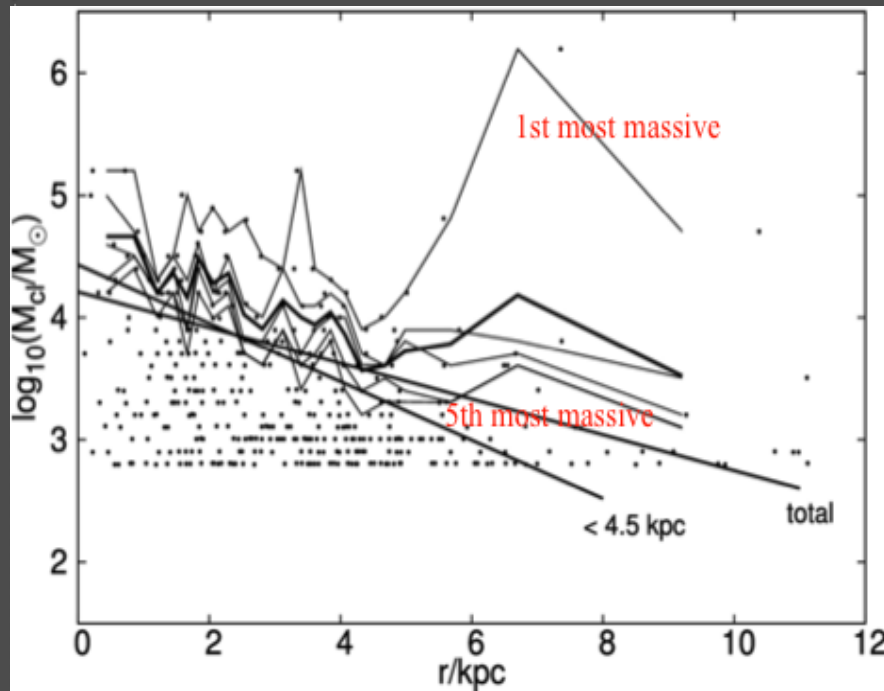


# Stochastic star formation under scrutiny in M33 and the LMC

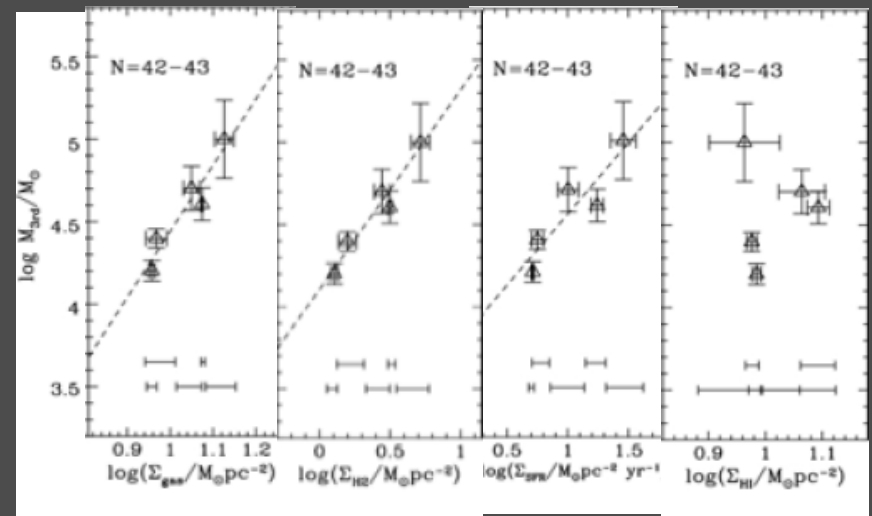


R.A. González-Lópezlira et al.

POSTER #74



Slope for  $M_{3rd} = 0.146$ , with probability  $\sim 10^{-9}$



$$M_{3rd} \propto \Sigma_{gas}^{3.8 \pm 0.3}$$

$$M_{3rd} \propto \Sigma_{H2}^{1.2 \pm 0.1}$$

$$M_{3rd} \propto \Sigma_{SFR}^{0.9 \pm 0.1}$$