

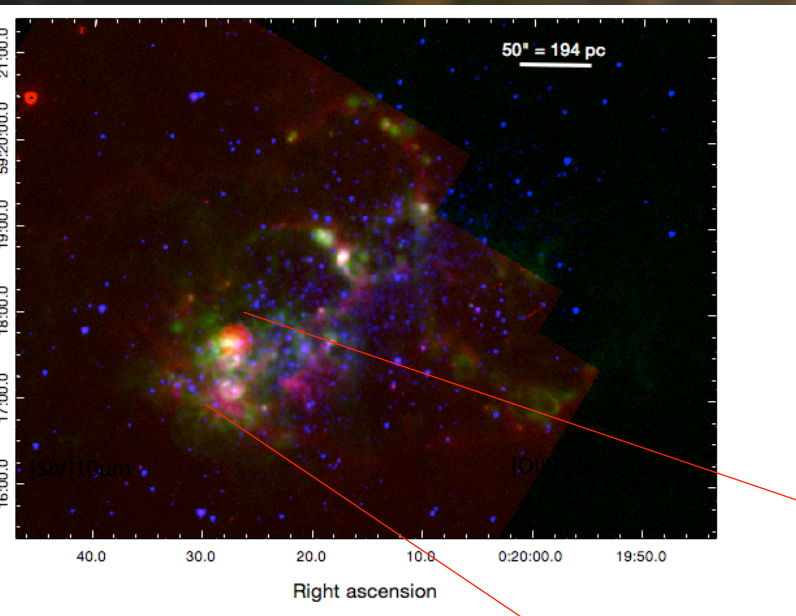
Effects of low-metallicity on the ISM properties: the nearby galaxy IC10

ter
4

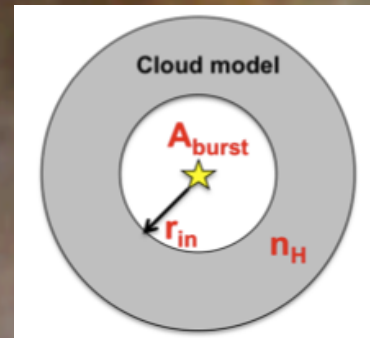
Fiorella L. Polles¹ (fiorella.polles@cea.fr), S. Madden, V. Lebouteiller, D. Cormier, F. Galliano, M-Y Lee, S. Lianou

¹Laboratoire AIM, CEA Saclay, 91190 Gif-sur-Yvette, France

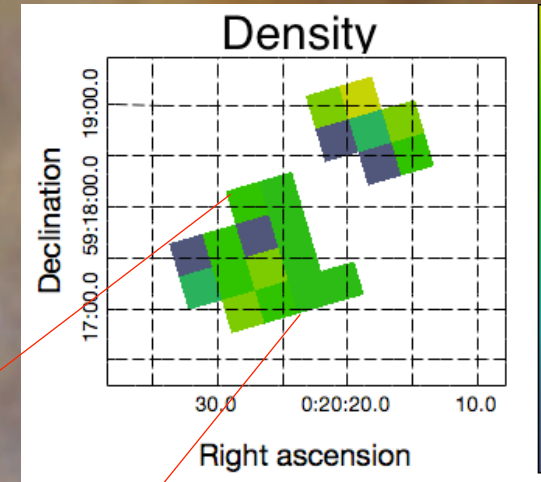
IC10:



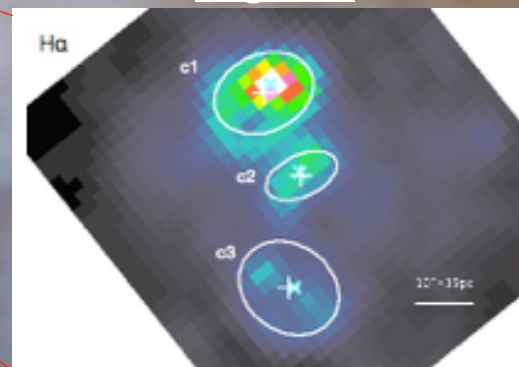
ISM modeling with Cloudy



Pixel by pixel modeling



Global star forming regions



- Distance: 800 kpc
- Metallicity: $Z_{\text{SMC}} < Z_{\text{IC10}} < Z_{\text{LMC}}$
- Observed with *Spitzer* and *Herschel*